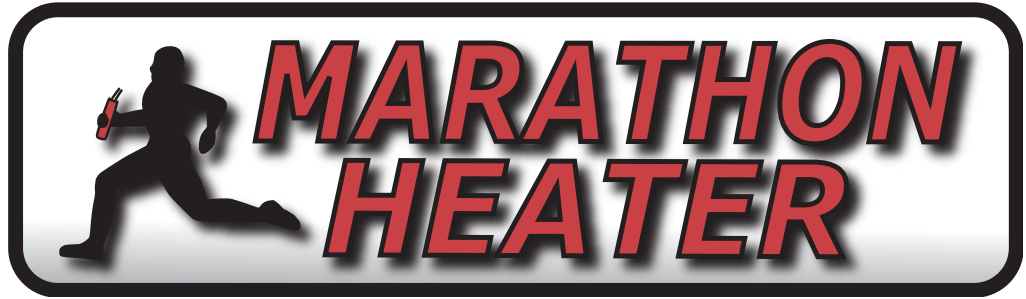




**SOUTHWEST**  
HEATER & CONTROLS

**BACKER MARATHON**

**HIGH TEMPERATURE AIR HEATERS**



**SOUTHWEST**  
HEATER & CONTROLS

10610 CONTROL PLACE  
DALLAS, TEXAS 75238

MAIN: 214-340-7500  
TOLL FREE: 800-687-2220

SALES@SWHC.COM  
SWHC.COM

## STANDARD CONSTRUCTION

**1** 1/2", 5/8" or 3/4 diameter 304 Stainless Steel Sheath.

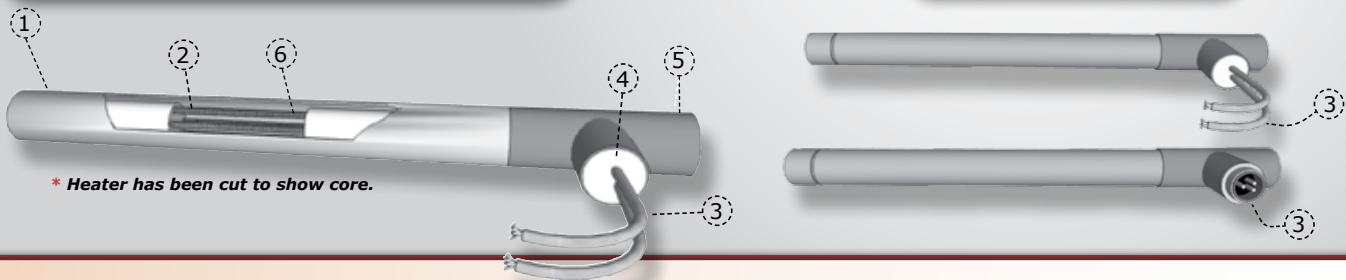
**2** Nickel-Chromium Coils.

**3** High temperature leads or 3 pin connector.

**4** Epoxy Seal

**5** Copper Tee

**6** 120 Volt and 240 Volt



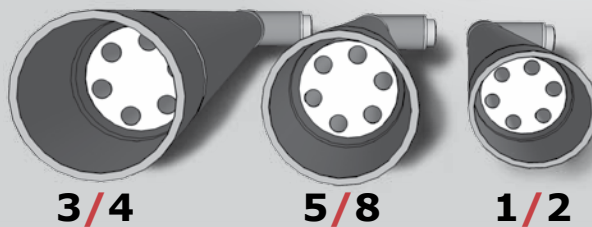
## OPTIONS

- Male or Female pipe thread on inlet or outlet.
- Brass or Stainless Steel fittings.
- Flanges
- SJO Cord
- Elbow on Outlet
- Stainless Steel Tee
- Various volts and Watts
- Custom configurations
- 1/2", 5/8" and 3/4" diameters available
- Optional Thermocouple at outlet for temperature control.



## SPECIFICATIONS

- Maximum Amps: 10
- Maximum CFM: 10
- Use clean air only.
- Heat air to temperatures as high as 1000° F.

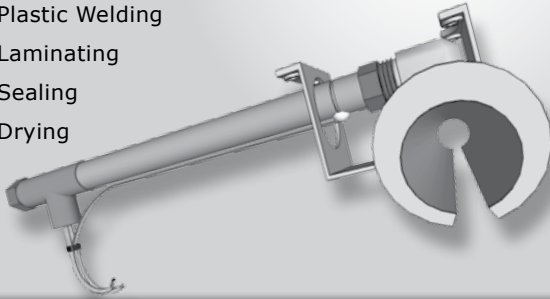


....and many more!

## APPLICATIONS

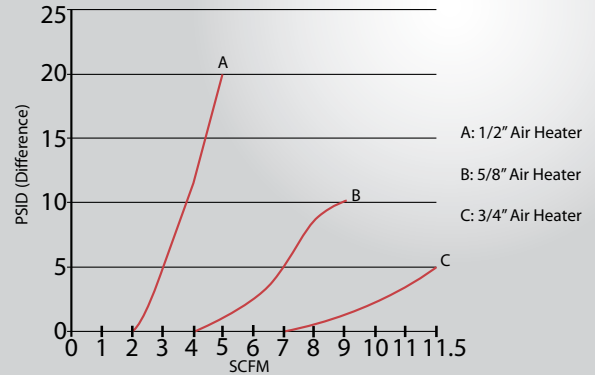
Marathon Heater manufactures and stocks several variations of 1/2" diameter air heaters for:

- Heat Staking
- Shrink Fitting
- Plastic Welding
- Laminating
- Sealing
- Drying



## PERFORMANCE

Input / Output Airflow Test



## STOCK LIST

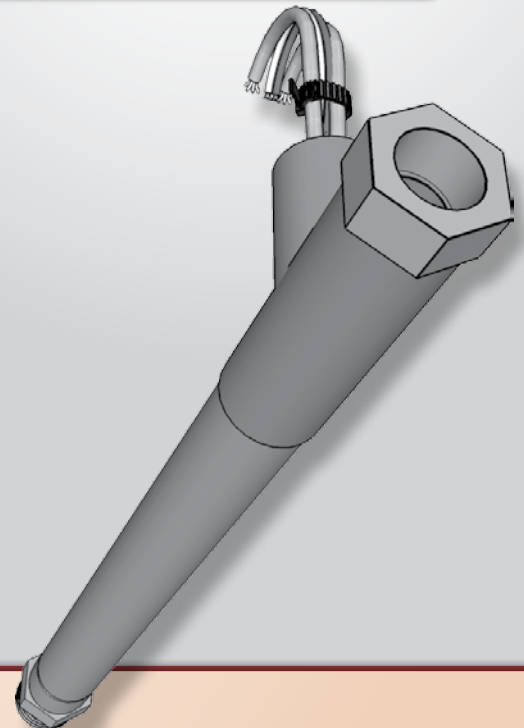
**THE FOLLOWING HEATERS ARE IN STOCK FOR IMMEDIATE DELIVERY**

Stock #	Volts	Watts	Min. Flow Rate (CFM)	Connection	Diameter	Length	Dimensions
AH50050R	120	400	4	36" Leads	.500		
AH50050T	240	400	4	36" Leads	.500		
AH50050V	120	600	5.5	36" Leads	.500		
AH50050X	240	600	5.5	36" Leads	.500		
AH50050S	120	400	4	3 prong socket	.500		
AH50050U	240	400	4	3 prong socket	.500		
AH50050W	120	600	5.5	3 prong socket	.500		
AH50050Y	240	600	5.5	3 prong socket	.500		

**Fittings can be added to any of the above heaters.**

- Add the following numbers to the part number when ordering.
- For example: AH50050R-1 for a 120 volt, 400 watt with 1/8" FPT fitting on inlet.

Prefix	Description
-1	1/8" FPT fitting on inlet
-2	3/8" MPT fitting on inlet
-3	1/8" FPT fitting on outlet
-4	3/8" MPT fitting on outlet
-5	1/8" FPT fitting on inlet, 1/8" FPT on outlet
-6	3/8" MPT fitting on inlet, 3/8" MPT on outlet
-7	1/8" FPT fitting on inlet, 3/8" MPT on outlet
-8	3/8" MPT fitting on inlet, 1/8" FPT on outlet.



## Other Backer Marathon Heater Products

**Ceramic Strip Heaters**



**Cartridge Heaters**



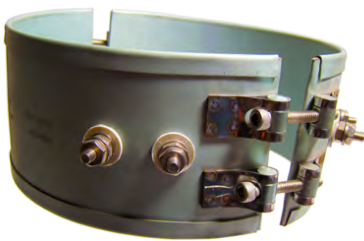
**Coil Heaters**



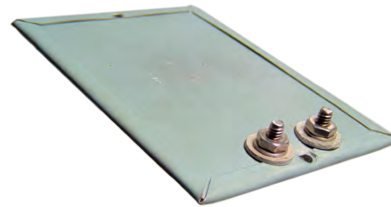
**Thermocouples**



**Mica Band Heaters**



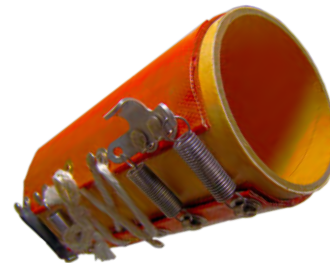
**Mica Strip Heaters**



**Ceramic Band Heaters**



**Flexible Silicone Heaters**



**Aluminum Heaters**



**Flexible Tubular Heaters**

