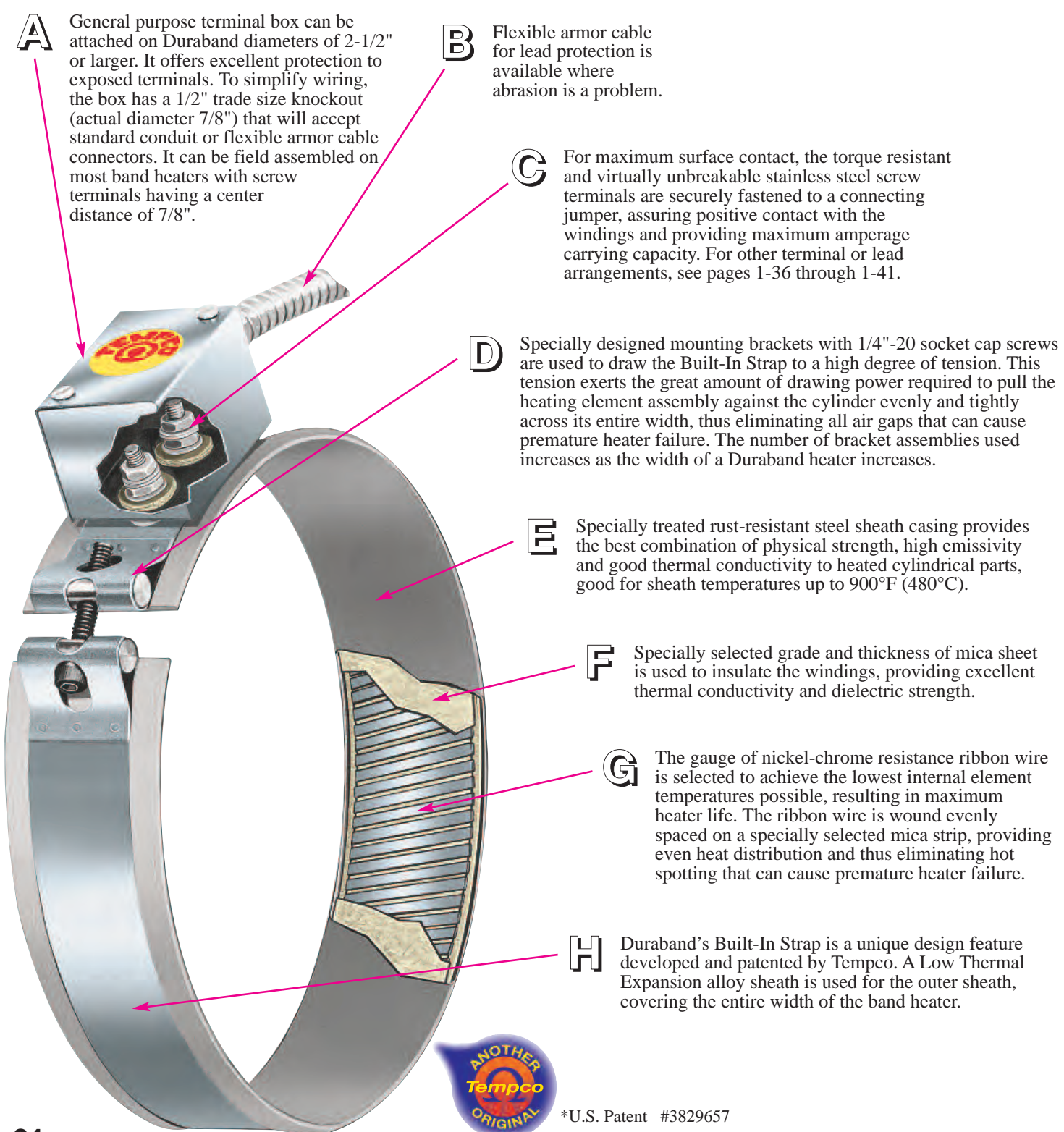




Duraband

DURABAND*

with **BUILT-IN STRAP**



A General purpose terminal box can be attached on Duraband diameters of 2-1/2" or larger. It offers excellent protection to exposed terminals. To simplify wiring, the box has a 1/2" trade size knockout (actual diameter 7/8") that will accept standard conduit or flexible armor cable connectors. It can be field assembled on most band heaters with screw terminals having a center distance of 7/8".

B Flexible armor cable for lead protection is available where abrasion is a problem.

C For maximum surface contact, the torque resistant and virtually unbreakable stainless steel screw terminals are securely fastened to a connecting jumper, assuring positive contact with the windings and providing maximum amperage carrying capacity. For other terminal or lead arrangements, see pages 1-36 through 1-41.

D Specially designed mounting brackets with 1/4"-20 socket cap screws are used to draw the Built-In Strap to a high degree of tension. This tension exerts the great amount of drawing power required to pull the heating element assembly against the cylinder evenly and tightly across its entire width, thus eliminating all air gaps that can cause premature heater failure. The number of bracket assemblies used increases as the width of a Duraband heater increases.

E Specially treated rust-resistant steel sheath casing provides the best combination of physical strength, high emissivity and good thermal conductivity to heated cylindrical parts, good for sheath temperatures up to 900°F (480°C).

F Specially selected grade and thickness of mica sheet is used to insulate the windings, providing excellent thermal conductivity and dielectric strength.

G The gauge of nickel-chrome resistance ribbon wire is selected to achieve the lowest internal element temperatures possible, resulting in maximum heater life. The ribbon wire is wound evenly spaced on a specially selected mica strip, providing even heat distribution and thus eliminating hot spotting that can cause premature heater failure.

H Duraband's Built-In Strap is a unique design feature developed and patented by Tempco. A Low Thermal Expansion alloy sheath is used for the outer sheath, covering the entire width of the band heater.



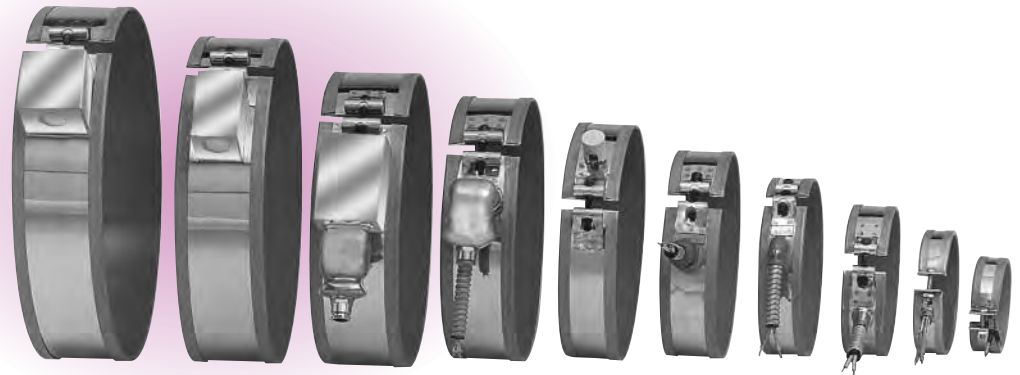
*U.S. Patent #3829657



makes handling and installation easier!

Typical Applications

- ➔ *Plastic Injection Molding Machines*
- ➔ *Plastic Extruders*
- ➔ *Oil Reclamation Equipment*
- ➔ *Food and Candy Extruders*
- ➔ *Drum Heating*
- ➔ *Extrusion Dies*
- ➔ *Holding Tanks*
- ➔ *Blow Molding Machines*
- ➔ *Vending Machines*
- ➔ *Barrels & Heads*
- ➔ *Food Service Warming*
- ➔ *Autoclaves & Sterilizers*
- ➔ *Metallurgical Analyzers*
- ➔ *Fluidized Beds*
- ➔ *Hot Runner Molds*
- ➔ *Pulp and Paper Processing Equipment*



Designed For Trouble-Free Service

Tempco's Duraband heater design is the result of many years of research, development and testing for a reliable mica insulated band heater that can perform at the higher operating temperatures [up to 900°F (480°C)] essential to process high temperature resins, providing long, efficient service necessary for today's high productivity of plastic extruders, injection and blow molding machines.

Duraband is a proven heater design for good life efficiency and dependability. It assures maintaining the lowest winding temperatures possible, keeping a low-mass heating element assembly for fast heat-up and quick thermal response to controls. It incorporates the Low Thermal Expansion Built-In Strap, a unique design feature originally developed and patented by Tempco.

Advantages and Variations

Duraband mica insulated heaters are widely used on operations involving heating of cylindrical surfaces and are manufactured in a full range of standard construction variations, physical dimensions, electrical ratings, and a complete arrangement of screw terminals and lead terminations. (See pages 1-36 through 1-41).

However, these standard Duraband heater variations and terminations do not represent the full extent of our capabilities. Tempco's engineering staff, with many years of experience in heat processing and temperature control applications, can assist you in designing the right Duraband heater for your specific application.

Construction Characteristics & Features

- * *Built-in bracket for superior clamping*
- * *Unbreakable and torque-resistant screw terminals*
- * *Temperatures up to 900°F (480°C)*
- * *Full width stainless steel built-in strap*
- * *Flexibility to incorporate holes and cutouts*
- * *Available two-piece and expandable designs*
- * *Best mica insulated heater on the market*
- * *Faster delivery than any other type of heater band*
- * *Most economical among various heater bands*
- * *Most versatile and commonly used heater band*



Duraband Specifications

Duraband® Standard Specifications and Tolerances

PERFORMANCE RATINGS

Maximum Temperature: Standard Sheath: 900°F (482°C)
Nominal Watt Density: 20-45 W/in² (3-7 W/cm²)
Maximum Watt Density: Dependent on heater size and operating temperature.

ELECTRICAL RATINGS

Maximum Voltage: 480 VAC
Dual Voltage or 3-Phase:
 Available depending on heater design
Maximum Amperage: lead wire termination: 10 amp
 screw terminations: 8-32UNF—20 amp; 10-32UNF—25 amp
Resistance Tolerance: +10%, -5%
Wattage Tolerance: +5%, -10%



Exposed electrical wiring on band heater installations is a violation of Electrical Safety Codes including O.S.H.A.

PHYSICAL SIZE CONSTRUCTION LIMITATIONS

Minimum Width: 3/4" (19.1 mm)
Width Tolerance: ±1/16" (1.59 mm)
Minimum Inside Diameter: 7/8" (22.1 mm)
Nominal Gap: 3/8" (9.5 mm)—If a larger gap is required for probes or thermocouples, specify when ordering.

BUILT-IN BRACKETS

Heater Width	Number of Brackets
1-1/2" to 3" (38-76 mm)	1
3-1/8" to 5" (79-127 mm)	2
5-1/8" to 6-7/8" (130-145 mm)	3
7" to 10" (178-254 mm)	4
10-1/8" to 15" (257-381 mm)	5

If tighter tolerances are required, consult Tempco.

Minimum ID and Width for Construction/Clamping Styles

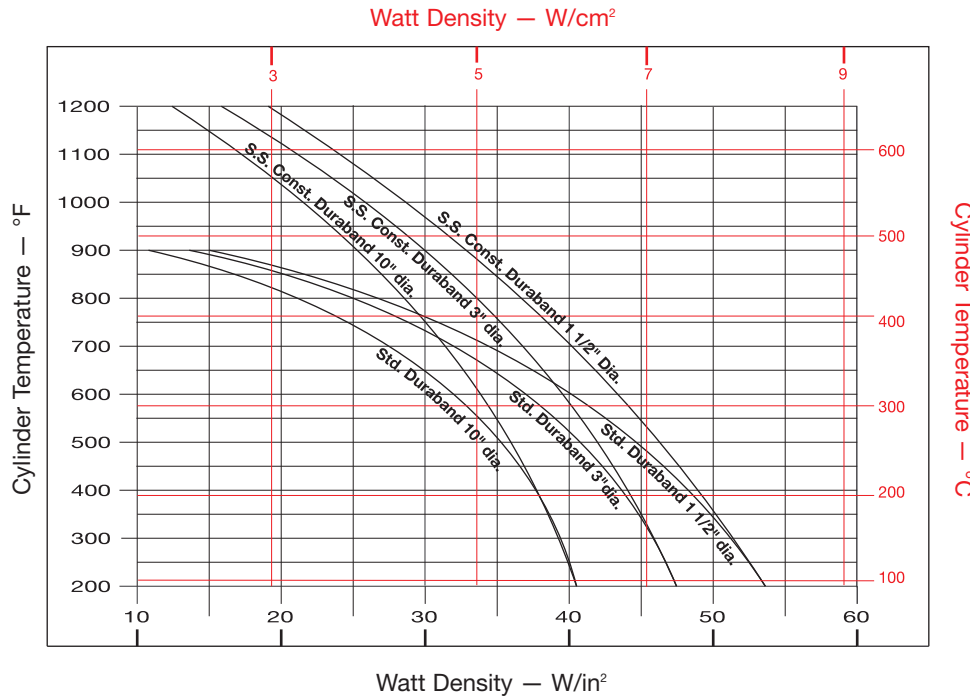
Style	Min. ID		Min. Width	
	in	mm	in	mm
NB	2	50.8	1-1/4	31.8
NS	3	76.2	1-1/4	31.8
NE	2-1/2	63.5	1-1/4	31.8
SB	7/8	22.1	3/4	19.1
SS	2	50.8	3/4	19.1
SE	2-1/2	63.5	1-1/4	31.8
FB	1	25.4	3/4	19.1
FS	2	50.8	3/4	19.1
FE	2-1/2	63.5	1-1/4	31.8
SL	4	101.6	1-1/4	31.8
NSL	4	101.6	1-1/4	31.8
NEL	4	101.6	1-1/4	31.8
LT	7	177.8	1-1/2	38.1
LS	7	177.8	1-1/2	38.1
LE	7	177.8	1-1/2	38.1
TWL	1	25.4	1	25.4
RNB	5-1/2	134.7	1	25.4
RNS	10	254	1	25.4



Note: Refer to individual descriptions for further information. Actual heater minimums will be a combination of termination and construction/strap styles.



Duraband® Maximum Watt Densities



MAXIMUM ALLOWABLE WATT DENSITY

The chart displays the maximum Watt Density curves for various diameter heaters. Use this chart when determining the appropriate wattage value for your chosen heater.

Be aware that certain factors will require you to derate the watt density (W/in²) of your heater selection.

CAUTION Failure to adhere to the maximum allowable watt density per heater size will result in poor operating life.

CORRECTION FACTORS

For heaters wider than 3" (76.2 mm), reduce maximum recommended watt density from chart by 20%.

For applications using insulating shroud, reduce maximum recommended watt density from chart by 25%.

CALCULATING MAXIMUM WATT DENSITY

Factors to be taken into consideration

- A. Type of controls
- B. Voltage variations
- C. Machine cycling rate
- D. Type of resin being processed
- E. Coefficient of thermal expansion and conductivity of the cylinder
- F. Designing a heater that closely matches the wattage requirement will decrease the frequency of cycling and temperature overshoot, thereby increasing the life of the heater.

Once these factors have been established, proceed with the following steps:

1. Determine the maximum operating temperature.
2. Calculate the total wattage required to obtain the maximum operating temperature. (See engineering section.)
3. Determine the quantity and size of the heater bands to be used. 1-1/2" through 3" wide band heaters have proven to be the most efficient and reliable in most cylindrical heating applications.
4. Determine individual band heater wattage by dividing the total required wattage by the quantity of band heaters selected.
5. Determine the band heater watt density by subtracting unheated areas from the band heater diameter created by screw terminals, gaps, holes, and cutouts (see formula below).
6. Determine if the required watt density previously calculated exceeds the maximum recommended watt density. Note the maximum cylinder temperature required on the left-hand side of the graph, follow the horizontal line until it intersects with the line of the band heater being used, and read directly down to obtain the maximum recommended watt density (W/in²).
7. If the calculated watt density is higher than the recommended value, it must be corrected or it will cause poor heater life. This can be accomplished by using more band heaters, lowering the heater wattage, or using a different construction type or a different type of band heater.
8. Should you have a problem in selecting the proper band heater or establishing watt density for your application, consult with one of the qualified engineers at Tempco.

Nominal Unheated Areas	
Construction Style	Unheated Area to Subtract
One-piece band	1" × width
Two-piece band	2" × width
Holes and cutouts	Size + 1/2" × width

Watt Density Formula

$$\text{Watt Density (W/in}^2\text{)} = \frac{\text{Wattage}}{(3.14 \times (\text{Band ID}) - \text{Gap} - 1 - 3/8) \times \text{Band Width} - \text{Unheated Area (see table)}}$$

Unheated Area (See Table) = Unheated area for construction style + unheated area for any holes or cutouts



Duraband® Construction Styles

3 CONSTRUCTION TYPES



Shown with Type NB Built-In Strap

One-Piece Band

The one-piece construction is available on any screw or lead termination and clamping variation. It can be used where band heaters can be slipped over the end of the cylinder.

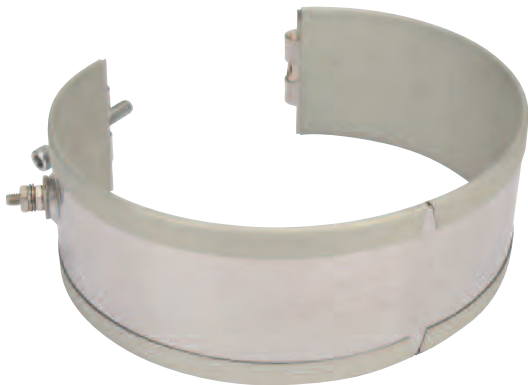


Shown with Type NS Built-In Strap

Two-Piece Band

The Two-Piece construction is available on any screw or lead and clamping variation. The Duraband two-piece design provides a **built-in hinge**, making handling and installation easier. It is used on large cylinders or where the heater cannot be slipped over the end of the cylinder. Two-piece band heaters are rated at watts and volts per each half when ordering.

NOTE: Multiple segment designs are recommended on larger diameter (typically larger than 15") heaters to improve the clamping force and increase the surface contact between the heater and the barrel for efficient heat transfer.



Shown with Type NE Built-In Strap

One-Piece Expandable Band

The one-piece expandable construction is available on any screw or lead and clamping variation. It can be used where a one-piece band heater would have to be expanded to fit over the barrel during installation, rather than slipped over the end of the barrel.



Note: The One-Piece Expandable Band should not be opened and closed more than twice.



Duraband® Construction Styles

3 CONSTRUCTION TYPES



Shown with Type NB Built-In Strap

One-Piece Band

The one-piece construction is available on any screw or lead termination and clamping variation. It can be used where band heaters can be slipped over the end of the cylinder.

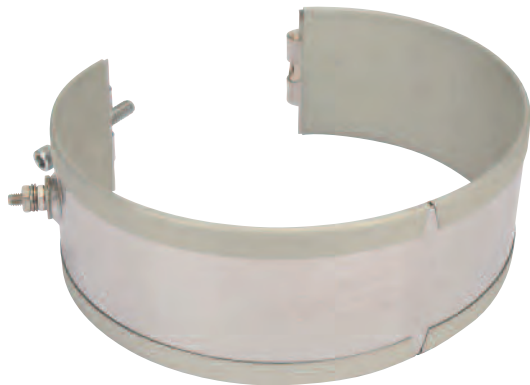


Shown with Type NS Built-In Strap

Two-Piece Band

The Two-Piece construction is available on any screw or lead and clamping variation. The Duraband two-piece design provides a **built-in hinge**, making handling and installation easier. It is used on large cylinders or where the heater cannot be slipped over the end of the cylinder. Two-piece band heaters are rated at watts and volts per each half when ordering.

NOTE: Multiple segment designs are recommended on larger diameter (typically larger than 15") heaters to improve the clamping force and increase the surface contact between the heater and the barrel for efficient heat transfer.



Shown with Type NE Built-In Strap

One-Piece Expandable Band

The one-piece expandable construction is available on any screw or lead and clamping variation. It can be used where a one-piece band heater would have to be expanded to fit over the barrel during installation, rather than slipped over the end of the barrel.



Note: The One-Piece Expandable Band should not be opened and closed more than twice.

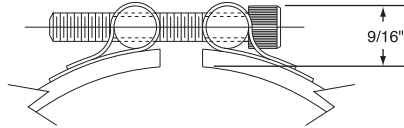


Duraband® Construction/Clamping Variations

Standard Built-In Strap Clamping (Low Thermal Expansion)

The Built-In Strap is available with any screw or lead termination and construction variation. The Built-In Strap eliminates the use of awkward-to-handle separate straps, providing more drawing power than any other type of clamping system. The Duraband with Built-In Strap is standard on many designs.

Consult Tempco for multiple segment heaters.



Type NB Shown

Type NB—One-Piece Band

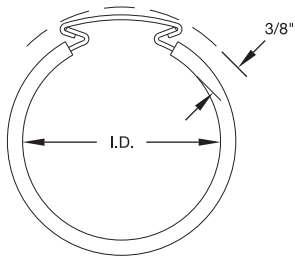
Min. ID: 2" (50.8 mm)
Min. Width: 1-1/4" (31.8 mm)

Type NS—Two-Piece Band

Min. ID: 3" (76.2 mm)
Min. Width: 1-1/4" (31.8 mm)

Type NE—One-Piece Expandable Band

Min. ID: 2-1/2" (63.5 mm)
Min. Width: 1-1/4" (31.8 mm)

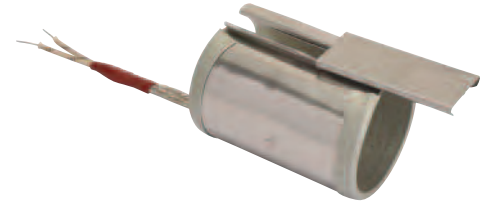


Wedge Lock

Wedge Lock clamping is designed for applications where mounting space is severely limited. It lends itself mainly to small diameter nozzle heaters.

Type TWL—One-Piece Band

Min. ID: 1" (25.4 mm)
Min. Width: 1" (25.4 mm)
Max. Width: 3-1/2" (88.9 mm)



Separate Straps

The Separate Strap clamping is available with any screw or lead termination and construction variation. It is strongly recommended that the Duraband with Built-In Strap design be used whenever possible because it provides more drawing power than any other type of clamping system.

Consult Tempco for multiple segment heaters.



Type SB Shown

Type SB—One-Piece Band

Min. ID: 7/8" (22.2 mm)
Min. Width: 3/4" (19.1 mm)

Type SS—Two-Piece Band

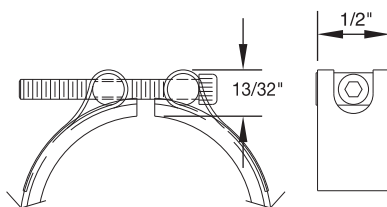
Min. ID: 2" (50.8 mm)
Min. Width: 3/4" (19.1 mm)

Type SE—One-Piece Expandable Band

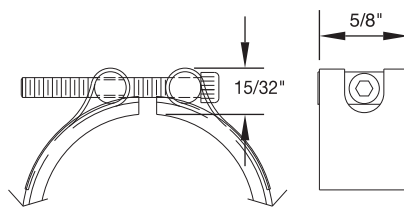
Min. ID: 2-1/2" (63.5 mm)
Min. Width: 1-1/4" (31.8 mm)

Clearance Dimensions for Separate Strap Clamping

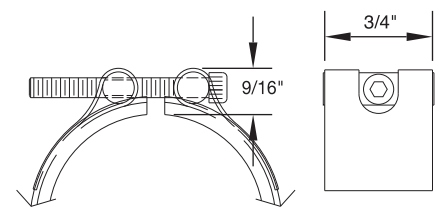
Separate strap clearance dimensions are dependent on heater ID. The strap dimensions are shown below.



< 2" ID — 6-32 Screw



2 to 3-1/2" ID — 8-32 Screw



> 3-1/2" ID — 1/4-20 Screw

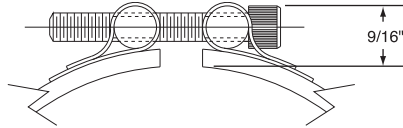


Duraband® Construction/Clamping Variations

Standard Built-In Strap Clamping (Low Thermal Expansion)

The Built-In Strap is available with any screw or lead termination and construction variation. The Built-In Strap eliminates the use of awkward-to-handle separate straps, providing more drawing power than any other type of clamping system. The Duraband with Built-In Strap is standard on many designs.

Consult Tempco for multiple segment heaters.



Type NB Shown

Type NB—One-Piece Band

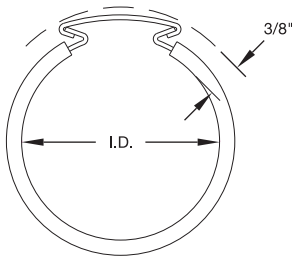
Min. ID: 2" (50.8 mm)
Min. Width: 1-1/4" (31.8 mm)

Type NS—Two-Piece Band

Min. ID: 3" (76.2 mm)
Min. Width: 1-1/4" (31.8 mm)

Type NE—One-Piece Expandable Band

Min. ID: 2-1/2" (63.5 mm)
Min. Width: 1-1/4" (31.8 mm)

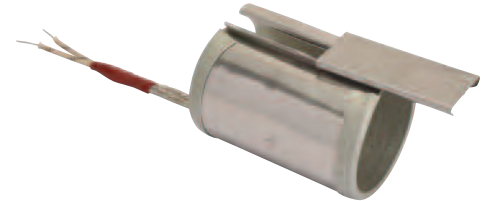


Wedge Lock

Wedge Lock clamping is designed for applications where mounting space is severely limited. It lends itself mainly to small diameter nozzle heaters.

Type TWL—One-Piece Band

Min. ID: 1" (25.4 mm)
Min. Width: 1" (25.4 mm)
Max. Width: 3-1/2" (88.9 mm)



Separate Straps

The Separate Strap clamping is available with any screw or lead termination and construction variation. It is strongly recommended that the Duraband with Built-In Strap design be used whenever possible because it provides more drawing power than any other type of clamping system.

Consult Tempco for multiple segment heaters.



Type SB Shown

Type SB—One-Piece Band

Min. ID: 7/8" (22.2 mm)
Min. Width: 3/4" (19.1 mm)

Type SS—Two-Piece Band

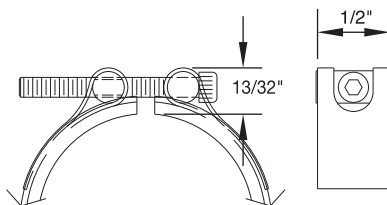
Min. ID: 2" (50.8 mm)
Min. Width: 3/4" (19.1 mm)

Type SE—One-Piece Expandable Band

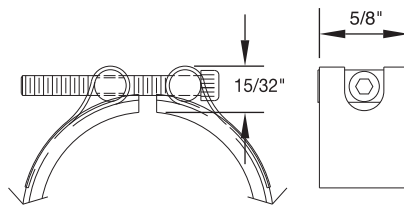
Min. ID: 2-1/2" (63.5 mm)
Min. Width: 1-1/4" (31.8 mm)

Clearance Dimensions for Separate Strap Clamping

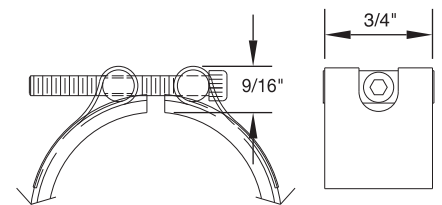
Separate strap clearance dimensions are dependent on heater ID. The strap dimensions are shown below.



< 2" ID — 6-32 Screw



2 to 3-1/2" ID — 8-32 Screw



> 3-1/2" ID — 1/4-20 Screw

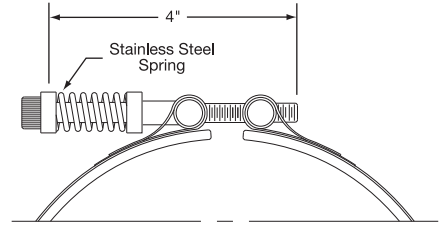


Duraband® Construction/Clamping Variations



Spring Loaded with Built-In Bracket

The Heavy Duty Stainless Steel Spring with Built-In Bracket is a variation on the basic Duraband design. It is available with any screw or lead termination and construction variation. It is recommended for heaters over 12" in diameter, and for any diameter heater used in the vertical position, to prevent the heater from slipping off the machine. The springs provide constant tension, therefore maintaining optimum surface contact against the cylinder being heated.



Consult Tempco for multiple segment heaters.

Type SL—One-Piece Band
Min. ID: 4" (101.6 mm)
Min. Width: 1-1/4" (31.8 mm)

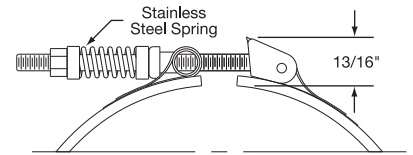
Type NSL—Two-Piece Band
Min. ID: 4" (101.6 mm)
Min. Width: 1-1/4" (31.8 mm)

Type NEL—One-Piece Expandable Band
Min. ID: 4" (101.6 mm)
Min. Width: 1-1/4" (31.8 mm)



Latch and Trunnion

The Latch and Trunnion Clamping System is available with any screw or lead termination and construction variation. It is ideal in absorbing thermal expansion due to the spring loading on the screws. The latch fully opens, facilitating installation on large diameter cylinders. The outer sheath is made from a Low Thermal Expansion alloy.



Consult Tempco for multiple segment heaters.

Type LT—One-Piece Band
Min. ID: 7" (177.8 mm)
Min. Width: 1-1/2" (38.1 mm)

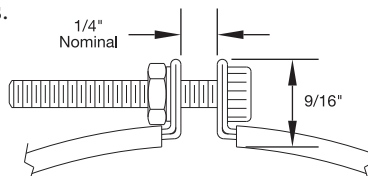
Type LS—Two-Piece Band
Min. ID: 7" (177.8 mm)
Min. Width: 1-1/2" (38.1 mm)

Type LE—One-Piece Expandable Band
Min. ID: 7" (177.8 mm)
Min. Width: 1-1/2" (38.1 mm)



Bent-Up Flange (Ears)

The Bent-Up Flange clamping is available with any screw or lead termination and construction variation. The outer sheath is made from a Low Thermal Expansion alloy. The Bent-Up Flange design is best suited for narrow band heaters with small diameters.



Note: The Bent-Up flange design should only be used when other clamping methods are not suitable for a specific application. Tempco recommends Built-In Strap Clamping be used whenever possible, especially on large diameter heaters, because it provides superior clamping power.

Type FB—One-Piece Band
Min. ID: 1" (25.4 mm)
Min. Width: 3/4" (19.1 mm)

Type FS—Two-Piece Band
Min. ID: 2" (50.8 mm)
Min. Width: 3/4" (19.1 mm)

Type FE—One-Piece Expandable Band
Min. ID: 2-1/2" (63.5 mm)
Min. Width: 1-1/4" (31.8 mm)



Duraband® Internal Reverse Bands

Type RN□—Internal Reverse Band (with bracket clamping)

This construction style is used to heat cylindrical surfaces from the inside on heaters 5-1/2" diameter and larger.

Type RNB—Reverse 1-Piece Construction

ID: 5-1/2" (139.7 mm) to 10" (254.0 mm)
Width: 1" (25.4 mm) to 3-1/2" (88.9 mm)
Maximum Voltage: 240VAC

Type RNS—Reverse 2-Piece Construction

ID: 10" (254.0 mm) to 20" (508.0 mm)
Width: 1" (25.4 mm) to 3-1/2" (88.9 mm)
Maximum Voltage: 240VAC



Type RTWL—Internal Reverse Band (with wedge lock clamping)

This construction style is used to heat cylindrical surfaces from the inside on heaters less than 5" outside diameter.

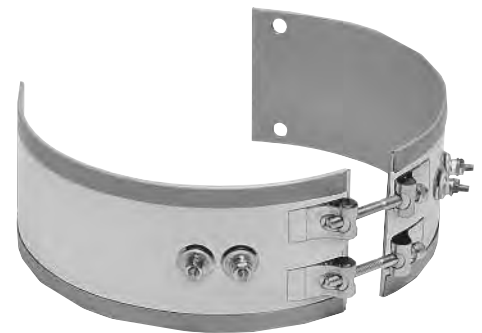
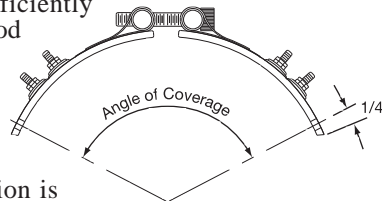
ID: Less than 5-1/2" (139.7 mm)
Width: 1" to 3-1/2" (25.4 - 88.9 mm)

For IDs greater than 20", consult Tempco with your requirements.

Duraband Partial Coverage

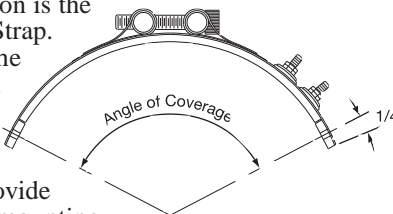
Type NS — 2-Piece With Built-In Brackets

Partial coverage band heaters are normally required when holes and cutouts will not allow the heater to sufficiently clear the machine obstructions. The preferred method of construction is the Two-Piece Band Heater with Built-In Brackets as illustrated. The heater is screwed down to the cylinder at the ends and the built-in Low Thermal Expansion Strap pulls the heater tightly against the cylinder being heated. The standard center of hole to edge of heater dimension is 1/4". When ordering, please provide the angle of coverage from center to center of the mounting screw holes as shown.



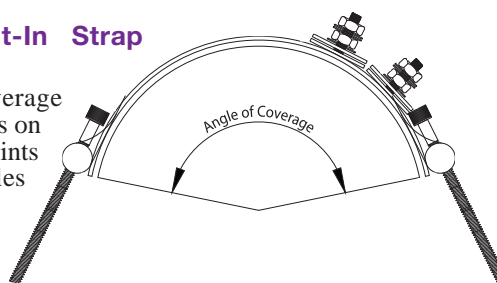
Type PS — One-Piece with Two-Piece Separate Strap with Padded Ends

The alternate method of partial coverage construction is the One-Piece Band Heater with a separate Two-Piece Strap. The two-piece strap itself is screwed down at the padded ends, allowing the heater to float between the pads as illustrated. When the strap is tightened, it will pull the heater against the cylinder being heated. The standard center of hole to edge of heater dimension is 1/4". When ordering, please provide the angle of coverage from center to center of the mounting screw holes as shown.



Type NB — One-Piece with Built-In Strap Clamping

Another alternate method of partial coverage construction. The one piece with clamp screws on both sides allows it to be secured to anchor points on either side of a barrel without drilling holes into the barrel.





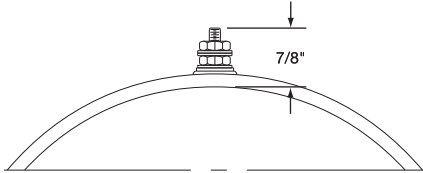
Terminations

Stainless Steel Power Terminals: Type T1, Type T2 & Type T3

Available on any clamping or construction variation, the specially designed Stainless Steel Power Terminals are internally connected to the heater and are resistant to over-torquing. The screw terminals are virtually unbreakable. Secure tightening of the electrical connections is essential for safety and long heater life.

Duraband® Type T1 – Screw Terminals

Considered standard on most band heaters unless otherwise specified.



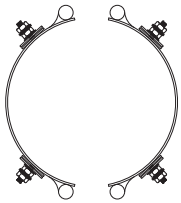
One-Piece Band

Standard Termination Location:
each side of gap; center of width

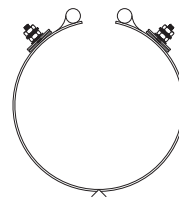
- * **Minimum Inside Diameter:** 2" (50.8 mm)
- * **Minimum Width:** 7/8" (22.2 mm)
- * **Post Terminals:** 10-32 standard except 8-32 on < 1" wide heaters & heaters with ID < 3"
- * **Max. Volts/Amps:** 480VAC/ 25A (10-32) or 20A (8-32)

Two-Piece Band

Standard Termination Location:
next to gaps on each half;
center of width



- * **Minimum Inside Diameter:** 2" (50.8 mm)
- * **Minimum Width:** 7/8" (22.2 mm)
- * **Post Terminals:** 10-32 standard except 8-32 on < 1" wide heaters & heaters with ID < 3"
- * **Max. Volts/Amps:** 480VAC/ 25A (10-32) or 20A (8-32) each half



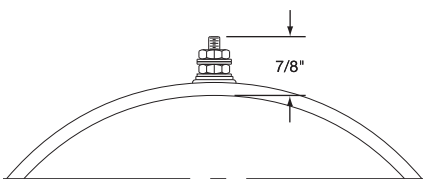
One-Piece Expandable Band

Standard Termination Location:
each side of gap; center of width

- * **Minimum Inside Diameter:** 2-1/2" (63.5 mm)
- * **Minimum Width:** 1-1/4" (31.8 mm)
- * **Post Terminals:** 10-32 standard except 8-32 on heaters with ID < 3"
- * **Max. Volts/Amps:** 480VAC/ 25A (10-32) or 20A (8-32)

Duraband Type T2 – Screw Terminals

Recommended for narrow band heaters where screw terminals are preferred or the C2 terminal box protection is required.



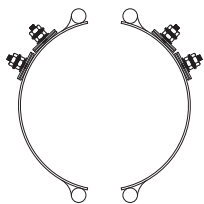
One-Piece Band

Standard Termination Location:
next to gap; center of width

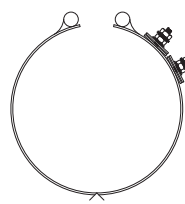
- * **Minimum Inside Diameter:** 2" (50.8 mm)
- * **Minimum Width:** 7/8" (22.2 mm)
- * **Post Terminals:** 10-32 standard except 8-32 on < 1" wide heaters & heaters with ID < 3"
- * **Max. Volts/Amps:** 480VAC/ 25A (10-32) or 20A (8-32)

Two-Piece Band

Standard Termination Location:
next to same gap on each half;
center of width



- * **Minimum Inside Diameter:** 2" (50.8 mm)
- * **Minimum Width:** 7/8" (22.2 mm)
- * **Post Terminals:** 10-32 standard except 8-32 on < 1" wide heaters & heaters with ID < 3"
- * **Max. Volts/Amps:** 480VAC/ 25A (10-32) or 20A (8-32) each half



One-Piece Expandable Band

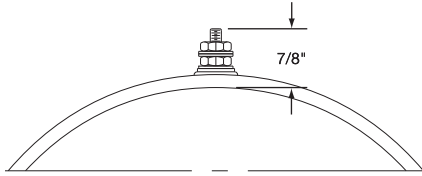
Standard Termination Location:
next to gap; center of width

- * **Minimum Inside Diameter:** 2-1/2" (63.5 mm)
- * **Minimum Width:** 1-1/4" (31.8 mm)
- * **Post Terminals:** 10-32 standard except 8-32 on heaters with ID < 3"
- * **Max. Volts/Amps:** 480VAC/ 25A (10-32) or 20A (8-32)



Duraband® Type T3 – Screw Terminals

The preferred design on band heaters over 3" (76.2 mm) wide or when C3 terminal box is required.



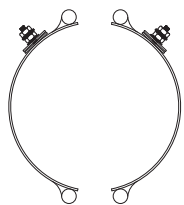
One-Piece Band

Standard Termination Location:
next to gap; across center of width

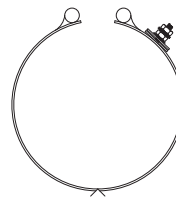
- * **Minimum Inside Diameter:** 2" (50.8 mm)
- * **Minimum Width:** 2" (50.8 mm)
- * **Post Terminals:** 10-32 standard except 8-32 on 2" to 2-1/2" wide heaters & heaters with ID < 3"
- * **Max. Volts/Amps:** 480VAC/25A (10-32) or 20A (8-32)

Two-Piece Band

Standard Termination Location:
next to same gap on each half;
across center of width



- * **Minimum Inside Diameter:** 2" (50.8 mm)
- * **Minimum Width:** 2" (50.8 mm)
- * **Post Terminals:** 10-32 standard except 8-32 on 2" to 2-1/2" wide heaters & heaters with ID < 3"
- * **Max. Volts/Amps:** 480VAC/25A (10-32) or 20A (8-32) each half



One-Piece Expandable Band

Standard Termination Location:
next to gap; across center of width

- * **Minimum Inside Diameter:** 2-1/2" (63.5 mm)
- * **Minimum Width:** 2" (50.8 mm)
- * **Post Terminals:** 10-32 standard except 8-32 on 2" to 2-1/2" wide heaters & heaters with ID < 3"
- * **Max. Volts/Amps:** 480VAC/25A (10-32) or 20A (8-32)

Optional Igloo™ Ceramic Covers for Heaters with Screw Terminals

Igloo™ Ceramic Terminal Covers consist of two individual ceramic parts. Unlike conventional ceramic caps, Igloo fully insulates any standard #8 or #10 terminal lugs used for electrical hook-ups.

Limitations

To assemble Igloo covers, terminals should be at least 7/8" apart.

Min. ID: 2" (50.8 mm) **Min. Width:** 1-1/4" (31.7 mm)

Three types of Igloo™ bases are available:

Type C6 – Double Port In-Line P/N CER-101-104

Type C7 – Double Port 90° P/N CER-101-106

Type C8 – Single Port P/N CER-101-107

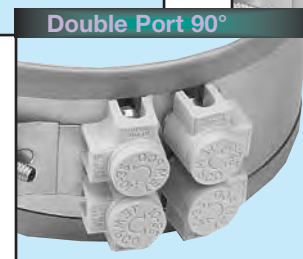
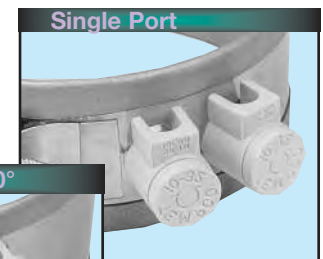
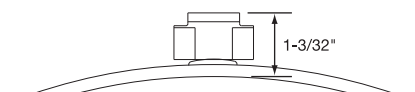
Igloo™ caps are available in the following three screw terminal sizes:

10-32 – P/N CER-102-101

10-24 – P/N CER-102-104

8-32 – P/N CER-102-105

When ordering, specify the type of Igloo and the screw terminal size.



Exposed electrical wiring on band heater installations is a violation of Electrical Safety Codes including O.S.H.A.



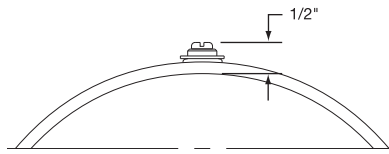
Terminations

Low-Profile Button Terminals: Type B1, Type B2 & Type B3

Available on any clamping or construction variation, the specially designed Stainless Steel Button Terminals are internally connected to the heater and are resistant to over-torquing

while offering a low profile for tight spaces. They are virtually unbreakable. Secure tightening of the electrical connections is essential for safety and long heater life.

Duraband® Type B1 – Button Terminals



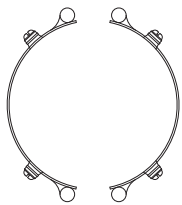
One-Piece Band

Standard Termination Location:
each side of gap; center of width

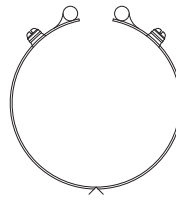
- * **Minimum Inside Diameter:** 2" (50.8 mm)
- * **Minimum Width:** 1-1/2" (38.1 mm)
- * **Screw Size:** 10-32 standard except 6-32 on IDs < 5"
- * **Maximum Volts:** 480VAC
- * **Maximum Amps:** 25A (10-32) or 20A (6-32)

Two-Piece Band

Standard Termination Location:
next to gaps on each half;
center of width



- * **Minimum Inside Diameter:** 2" (50.8 mm)
- * **Minimum Width:** 1-1/2" (38.1 mm)
- * **Screw Size:** 10-32 standard except 6-32 on IDs < 5"
- * **Maximum Volts/Amps:** 480VAC/ 25A (10-32) or 20A (6-32) each half

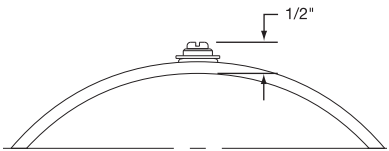


One-Piece Expandable Band

Standard Termination Location:
each side of gap; center of width

- * **Minimum Inside Diameter:** 2-1/2" (63.5 mm)
- * **Minimum Width:** 1-1/2" (38.1 mm)
- * **Screw Size:** 10-32 standard except 6-32 on IDs < 5"
- * **Maximum Volts/Amps:** 480VAC/ 25A (10-32) or 20A (6-32)

Duraband Type B2 – Button Terminals



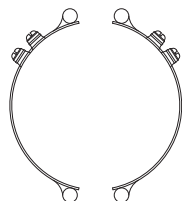
One-Piece Band

Standard Termination Location:
next to gap; center of width

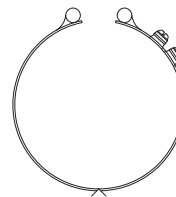
- * **Minimum Inside Diameter:** 2" (50.8 mm)
- * **Minimum Width:** 1-1/2" (38.1 mm)
- * **Screw Size:** 10-32 standard except 6-32 on IDs < 5"
- * **Maximum Volts:** 480VAC
- * **Maximum Amps:** 25A (10-32) or 20A (6-32)

Two-Piece Band

Standard Termination Location:
next to same gap on each half;
center of width



- * **Minimum Inside Diameter:** 2" (50.8 mm)
- * **Minimum Width:** 1-1/2" (38.1 mm)
- * **Screw Size:** 10-32 standard except 6-32 on IDs < 5"
- * **Maximum Volts/Amps:** 480VAC/ 25A (10-32) or 20A (6-32) each half



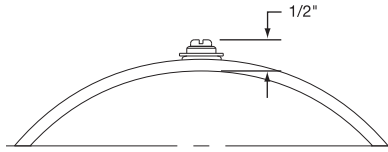
One-Piece Expandable Band

Standard Termination Location:
next to gap; center of width

- * **Minimum Inside Diameter:** 2-1/2" (63.5 mm)
- * **Minimum Width:** 1-1/2" (38.1 mm)
- * **Screw Size:** 10-32 standard except 6-32 on IDs < 5"
- * **Maximum Volts/Amps:** 480VAC/ 25A (10-32) or 20A (6-32)



Duraband® Type B3 – Button Terminals



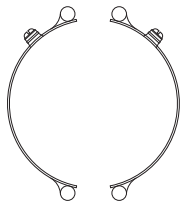
One-Piece Band

Standard Termination Location:
next to gap; across center of width

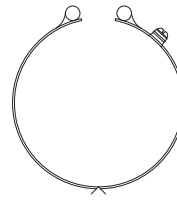
- * **Minimum Inside Diameter:** 2" (50.8 mm)
- * **Minimum Width:** 2-3/8" (60.3 mm)
- * **Screw Size:**
10-32 standard except 6-32 on IDs < 5"
- * **Maximum Volts:** 480VAC
- * **Maximum Amps:** 25A (10-32) or 20A (6-32)

Two-Piece Band

Standard Termination Location:
next to same gap on each half;
across center of width



- * **Minimum Inside Diameter:**
2" (50.8 mm)
- * **Minimum Width:** 2-3/8" (60.3 mm)
- * **Screw Size:** 10-32 standard except
6-32 on IDs < 5"
- * **Maximum Volts/Amps:** 480VAC/
25A (10-32) or 20A (6-32) each half



One-Piece Expandable Band

Standard Termination Location:
next to gap; across center of width

- * **Minimum Inside Diameter:**
2-1/2" (63.5 mm)
- * **Minimum Width:** 2-3/8" (60.3 mm)
- * **Screw Size:** 10-32 standard except
6-32 on IDs < 5"
- * **Maximum Volts/Amps:** 480VAC/
25A (10-32) or 20A (6-32)

Plain Lead Wire Terminations: Type L1, Type L2 & Type L4

Available on any clamping or construction variation.

Duraband Type L1 – Straight Lead Wires



The lead wires exit through a brass eyelet. The standard flexible leads are 10" long with 3" of fiberglass sleeving.

If longer leads are required, specify when ordering.



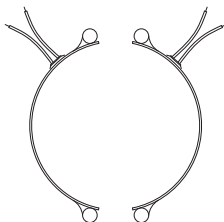
One-Piece Band

Standard Termination Location:
next to gap; center of width

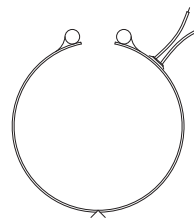
- * **Minimum Inside Diameter:** 2" (50.8 mm)
- * **Minimum Width:** 1" (25.4 mm)
- * **Maximum Volts:** 480VAC
- * **Maximum Amps:** 10A

Two-Piece Band

Standard Termination Location:
next to same gap on each half;
center of width



- * **Minimum Inside Diameter:**
2" (50.8 mm)
- * **Minimum Width:** 1" (25.4 mm)
- * **Maximum Volts:** 480V each half
- * **Maximum Amps:** 10A each half



One-Piece Expandable Band

Standard Termination Location:
next to gap; center of width

- * **Minimum Inside Diameter:**
2-1/2" (63.5 mm)
- * **Minimum Width:** 1-1/4" (31.8 mm)
- * **Maximum Volts:** 480V
- * **Maximum Amps:** 10A





Terminations

Duraband® Type L2 – Lead Wires

Continued from previous page...

L2 is the preferred termination on all small diameter and small width band heaters. The standard flexible leads are 10" long with 3" of fiberglass sleeving.

If longer leads are required, specify when ordering.



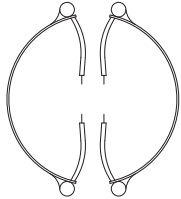
One-Piece Band

Standard Termination Location:
each side of gap; edge of width

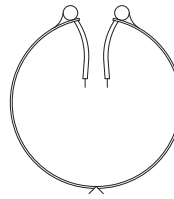
- * Minimum Inside Diameter: 7/8" (22.2 mm)
- * Minimum Width: 3/4" (19.1 mm)
- * Maximum Volts: 480VAC
- * Maximum Amps: 10A

Two-Piece Band

Standard Termination Location:
each side of each gap;
edge of width



- * Minimum Inside Diameter: 2" (50.8 mm)
- * Minimum Width: 3/4" (19.1 mm)
- * Maximum Volts: 480V each half
- * Maximum Amps: 10A each half



One-Piece Expandable Band

Standard Termination Location:
each side of gap;
edge of width

- * Minimum Inside Diameter: 2-1/2" (63.5 mm)
- * Minimum Width: 1-1/4" (31.8 mm)
- * Maximum Volts: 480V
- * Maximum Amps: 10A

Duraband Type L4 – Lead Wires

L4 is a suitable lead termination for small band heaters. The standard flexible leads are 10" long with 3" of fiberglass sleeving.

If longer leads are required, specify when ordering.



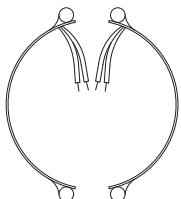
One-Piece Band

Standard Termination Location:
same side of gap; edge of width

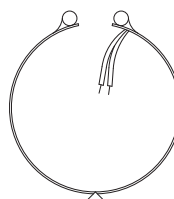
- * Minimum Inside Diameter: 7/8" (22.2 mm)
- * Minimum Width: 1" (25.4 mm)
- * Maximum Volts: 480VAC
- * Maximum Amps: 10A

Two-Piece Band

Standard Termination Location:
each side of same gap;
center of width



- * Minimum Inside Diameter: 2" (50.8 mm)
- * Minimum Width: 1" (25.4 mm)
- * Maximum Volts: 480V each half
- * Maximum Amps: 10A each half



One-Piece Expandable Band

Standard Termination Location:
same side of gap; edge of width

- * Minimum Inside Diameter: 2-1/2" (63.5 mm)
- * Minimum Width: 1-1/4" (31.8 mm)
- * Maximum Volts: 480VAC
- * Maximum Amps: 10A



Duraband®

Abrasion Resistant Lead Terminations:

Type W1, Type W2, Type W2M, Type W3, Type W4 & Type W5M

Available on any clamping or construction variation.
Wire braid leads offer sharp bending not possible with armor cable.

Duraband® Type W1 & W1T – Straight Wire Braid Leads



Type W1



Type W1T

Type W1 – Braided lead wire crimped in place for heaters under 2-1/2" I.D. and/or under 1-1/4" width.

Type W1T – Braided lead wire attached with a threaded fitting for heaters over/equal 2-1/2" I.D. and over/equal 1-1/4" width.

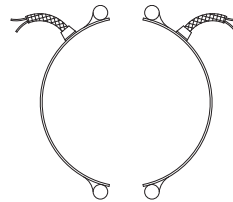
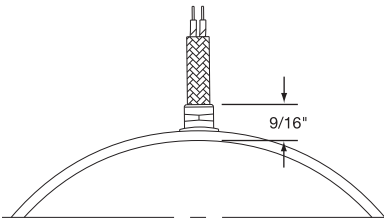
One-Piece Band

Standard Termination Location:
next to gap; center of width

- * Minimum Inside Diameter: 2" (50.8 mm)
- * Minimum Width: 1" (25.4 mm)
- * Maximum Volts: 480VAC
- * Maximum Amps: 10A

The standard leads are 10" of wire braid over 12" of flexible leads.

If longer leads are required, specify when ordering.



Two-Piece Band

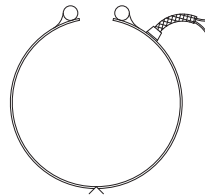
Standard Termination Location:
next to same gap on each half;
center of width

- * Minimum Inside Diameter: 2" (50.8 mm)
- * Minimum Width: 1" (25.4 mm)
- * Maximum Volts: 480VAC each half
- * Maximum Amps: 10A each half

One-Piece Expandable Band

Standard Termination Location:
next to gap; center of width

- * Minimum Inside Diameter: 2-1/2" (63.5 mm)
- * Minimum Width: 1-1/4" (31.8 mm)
- * Maximum Volts: 480VAC
- * Maximum Amps: 10A



Duraband Type W2 – Wire Braid Leads

The W2 wire braid exits at 180° from the gap for special nozzle heating applications. Sleeving is used for additional protection. The standard leads are 10" of wire braid over 12" of flexible leads with 3" of fiber-glass sleeving.

If longer leads are required, specify when ordering.



Note: Type W2 is not available on Two-Piece or One-Piece Expandable Duraband Heaters



One-Piece Band

Standard Termination Location:
opposite the gap; edge of width

- * Minimum Inside Diameter: 7/8" (22.2 mm)
- * Minimum Width: 1-1/8" (28.6 mm)
- * Maximum Volts: 480VAC
- * Maximum Amps: 10A

CONTINUED →



Terminations

Duraband® Type W3 – Single Wire Braid Leads

Continued from previous page...

Highly recommended for nozzle heating applications. The standard leads are 10" of wire braid over 12" of flexible leads with 3" of fiberglass sleeving.

If longer leads are required, specify when ordering.



One-Piece Band

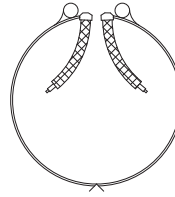
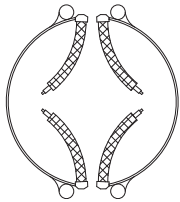
Standard Termination Location:
each side of gap; edge of width

- * **Minimum Inside Diameter:**
3/4" (19.1 mm)
- * **Minimum Width:** 7/8" (22.2 mm)
- * **Maximum Volts:** 480VAC
- * **Maximum Amps:** 10A

Two-Piece Band

Standard Termination Location:
each side of each gap; edge of width

- * **Minimum Inside Diameter:**
2" (50.8 mm)
- * **Minimum Width:** 3/4" (19.1 mm)
- * **Maximum Volts:** 480VAC each half
- * **Maximum Amps:** 10A each half



One-Piece Expandable Band

Standard Termination Location:
each side of gap; edge of width

- * **Minimum Inside Diameter:**
2-1/2" (63.5 mm)
- * **Minimum Width:** 1-1/4" (31.8 mm)
- * **Maximum Volts:** 480VAC
- * **Maximum Amps:** 10A

Duraband Type W4 – Wire Braid Leads On One Side

A suitable termination for nozzle heating applications. The standard leads are 10" of wire braid over 12" of flexible leads.

If longer leads are required, specify when ordering.



One-Piece Band

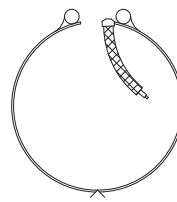
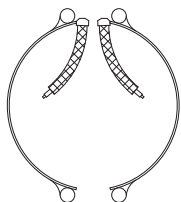
Standard Termination Location:
next to gap; edge of width

- * **Minimum Inside Diameter:**
7/8" (22.2 mm)
- * **Minimum Width:** 1" (25.4 mm)
- * **Maximum Volts:** 480VAC
- * **Maximum Amps:** 10A

Two-Piece Band

Standard Termination Location:
next to same gap on each half;
edge of width

- * **Minimum Inside Diameter:**
2" (50.8 mm)
- * **Minimum Width:** 1" (25.4 mm)
- * **Maximum Volts:** 480VAC each half
- * **Maximum Amps:** 10A each half



One-Piece Expandable Band

Standard Termination Location:
next to gap; edge of width

- * **Minimum Inside Diameter:**
2-1/2" (63.5 mm)
- * **Minimum Width:** 1-1/4" (31.8 mm)
- * **Maximum Volts:** 480VAC
- * **Maximum Amps:** 10A



Duraband® Type W2M – Right-Angle Wire Braid Leads, 90° to Heater

Stainless Steel Wire Braid exits perpendicular to the heater centerline through a low profile stainless steel cap. This cap acts as a strain relief which protects against excessive flexing or pulling of the lead wire. The standard leads are 10" of wire braid over 12" of flexible leads.

If longer leads are required, specify when ordering.



Note: Stainless steel construction may be required for widths of 7/8" (22.2 mm) to 1-5/8" (41.3 mm).



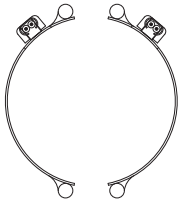
One-Piece Band

Standard Termination Location: opposite of gap; center of width

- * **Minimum Inside Diameter:** 1-1/2" (38.1 mm)
- * **Minimum Width:** 1-1/4" (31.8 mm)
- * **Maximum Volts:** 480VAC
- * **Maximum Amps:** 10A

Two-Piece Band

Standard Termination Location: next to same gap on each half; center of width



- * **Minimum Inside Diameter:** 2" (50.8 mm)
- * **Minimum Width:** 1-1/4" (31.8 mm)
- * **Maximum Volts:** 480VAC each half
- * **Maximum Amps:** 10A each half



One-Piece Expandable Band

Standard Termination Location: next to gap; center of width

- * **Minimum Inside Diameter:** 2-1/2" (63.5 mm)
- * **Minimum Width:** 1-1/4" (31.8 mm)
- * **Maximum Volts:** 480VAC
- * **Maximum Amps:** 10A

Duraband Type W5M – Right-Angle Wire Braid Leads, Parallel to Heater

Stainless Steel Wire Braid exits parallel to the heater centerline through a low profile stainless steel cap. This cap acts as a strain relief which protects against excessive flexing or pulling of the lead wire. The standard leads are 10" of wire braid over 12" of flexible leads.

If longer leads are required, specify when ordering.



Note: Stainless steel construction may be required for widths of 7/8" (22.2 mm) to 1-5/8" (41.3 mm).



Selection

TERMINATION

Guide

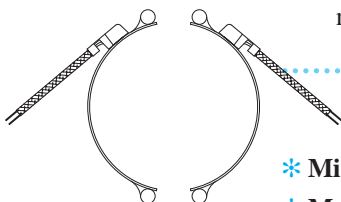
One-Piece Band

Standard Termination Location: opposite of gap; center of width

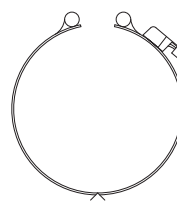
- * **Minimum Inside Diameter:** 1-1/2" (38.1 mm)
- * **Minimum Width:** 1-1/4" (31.8 mm)
- * **Maximum Volts:** 480VAC
- * **Maximum Amps:** 10A

Two-Piece Band

Standard Termination Location: next to same gap on each side; center of width



- * **Minimum Inside Diameter:** 2" (50.8 mm)
- * **Minimum Width:** 1-1/4" (31.8 mm)
- * **Maximum Volts:** 480VAC each half
- * **Maximum Amps:** 10A each half



One-Piece Expandable Band

Standard Termination Location: next to gap; center of width

- * **Minimum Inside Diameter:** 2-1/2" (63.5 mm)
- * **Minimum Width:** 1-1/4" (31.8 mm)
- * **Maximum Volts:** 480VAC
- * **Maximum Amps:** 10A



Terminations

Armor Cable Terminations: Type R1, Type R2 & Type R3

Available on any clamping or construction variation. Armor cable provides far superior protection to lead wires where abrasion is a constant problem. The standard leads are 10" of armor cable over 12" of flexible leads.

If longer leads are required, specify when ordering.

Duraband® Type R1 – Straight Armor Cable

Type R1A – Galvanized armor cable crimped in place for heaters under 2-1/2" I.D. and/or under 1-1/4" width.

Type R1AT – Galvanized armor cable attached with a threaded fitting for heaters over/equal 2-1/2" I.D. and over/equal 1-1/4" width.

Type R1B – Stainless Steel armor cable crimped in place for heaters under 2-1/2" I.D. and/or under 1-1/4" width.

Type R1BT – Stainless Steel armor cable attached with a threaded fitting for heaters over/equal 2-1/2" I.D. and over/equal 1-1/4" width.

Type R1C – Galvanized armor cable, tack welded

Type R1D – SS armor cable, tack welded

Type R1E – Galvanized armor cable, full silver brazing

Type R1F – SS armor cable, full silver brazing



One-Piece Band

Standard Termination Location:
next to gap; center of width

- * **Minimum Inside Diameter:** 1-1/2" (38.1 mm)
- * **Minimum Width:** 1" (25.4 mm)
- * **Maximum Volts:** 480VAC
- * **Maximum Amps:** 10A

Two-Piece Band

Standard Termination Location:
next to same gap on each half;
center of width

- * **Minimum Inside Diameter:** 2" (50.8 mm)
- * **Minimum Width:** 1" (25.4 mm)
- * **Maximum Volts/Amps:** 480VAC/10A each half

One-Piece Expandable Band

Standard Termination Location:
next to gap; center of width

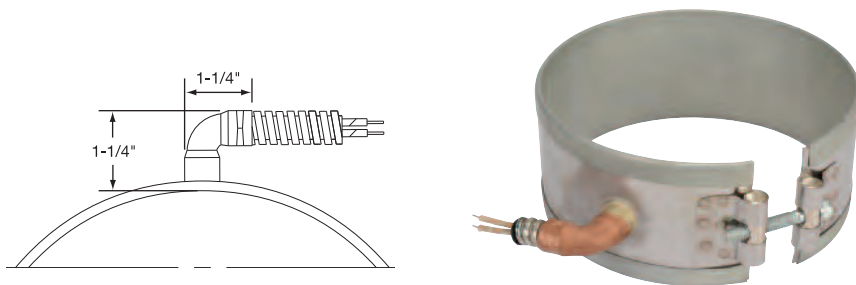
- * **Minimum Inside Diameter:** 2-1/2" (65.3 mm)
- * **Minimum Width:** 1-1/4" (31.8 mm)
- * **Maximum Volts/Amps:** 480VAC/10A

Duraband Type R2 – Right-Angle Armor Cable

Type R2A – Galvanized armor cable, crimped

Type R2B – SS armor cable, crimped

Type R2C – Plain leads, no cable



One-Piece Band

Standard Termination Location:
next to gap; center of width

- * **Minimum Inside Diameter:** 1-1/2" (38.1 mm)
- * **Minimum Width:** 1-1/4" (31.8 mm)
- * **Maximum Volts:** 480VAC
- * **Maximum Amps:** 10A

Two-Piece Band

Standard Termination Location:
next to same gap on each half;
center of width

- * **Minimum Inside Diameter:** 2" (50.8 mm)
- * **Minimum Width:** 1-1/4" (31.8 mm)
- * **Maximum Volts/Amps:** 480VAC/10A each half

One-Piece Expandable Band

Standard Termination Location:
next to gap; center of width

- * **Minimum Inside Diameter:** 2-1/2" (63.5 mm)
- * **Minimum Width:** 1-1/4" (31.8 mm)
- * **Maximum Volts/Amps:** 480VAC/10A



Duraband®

Duraband® Type R3 – Removable Armor Cable

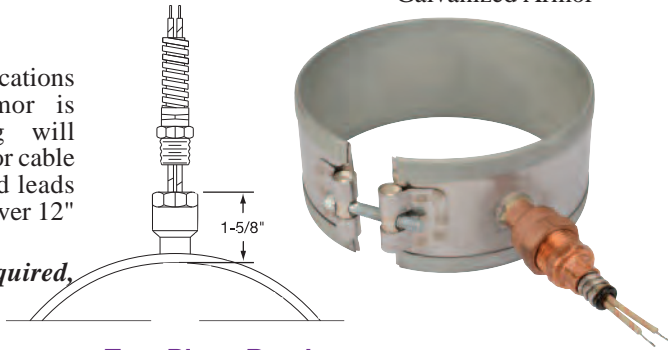
Type R3A – Plain Leads & Female Fitting

Type R3B – Leads, Male Adapter & Galvanized Armor

Type R3C – Leads, Male Adapter & SS Armor

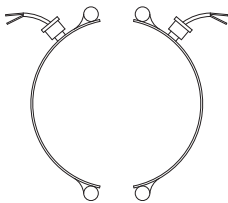
Recommended on applications where removable armor is required. The fitting will accept the standard armor cable connector. The standard leads are 10" of armor cable over 12" of flexible leads.

If longer leads are required, specify when ordering.

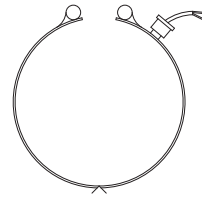


Two-Piece Band

Standard Termination Location: next to same gap on each half; center of width



- * **Minimum Inside Diameter:** 2" (50.8 mm)
- * **Minimum Width:** 1-1/4" (31.7 mm)
- * **Maximum Volts/Amps:** 480VAC/10A each half



One-Piece Band

Standard Termination Location: next to gap; center of width

- * **Minimum Inside Diameter:** 1-1/2" (38.1 mm)
- * **Minimum Width:** 1-1/4" (31.7 mm)
- * **Maximum Volts/Amps:** 480VAC/10A

One-Piece Expandable Band

Standard Termination Location: next to gap; center of width

- * **Minimum Inside Diameter:** 2-1/2" (63.5 mm)
- * **Minimum Width:** 1-1/4" (31.8 mm)
- * **Maximum Volts/Amps:** 480VAC/10A

Duraband Type S1 – Lead Wire Spring Strain Relief

A strain relief spring is attached to the heater at the termination exit to reduce strain on leads subjected to excessive flexing. The spring is 2-1/8" long. The flexible standard leads are 10" long with 3" of fiberglass sleeving. *If longer leads are required, specify when ordering.*

Type S1A – Plain Leads and Strain Relief Spring crimped in place for heaters under 2-1/2" I.D. and/or under 1-1/4" width.

Type S1AT – Plain Leads and Strain Relief Spring attached with a threaded fitting for heaters over/equal 2-1/2" I.D. and over/equal 1-1/4" width.

Type S1B – Stainless Steel Wire Braided Leads and Strain Relief Spring crimped in place for heaters under 2-1/2" I.D. and/or under 1-1/4" width. 10" of braid over 12" of flexible leads is standard.

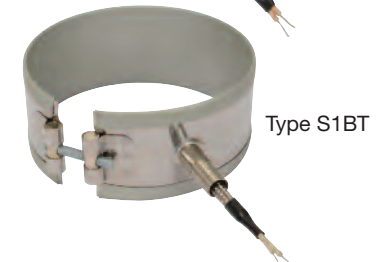
Type S1BT – Stainless Steel Wire Braided Leads and Strain Relief Spring attached with a threaded fitting for heaters over/equal 2-1/2" I.D. and over/equal 1-1/4" width. 10" of braid over 12" of flexible leads is standard.



One-Piece Band

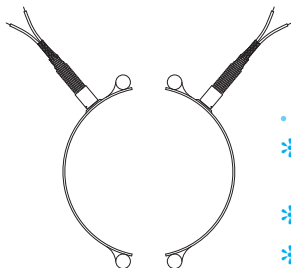
Standard Termination Location: next to gap; center of width

- * **Minimum Inside Diameter:** 2" (50.8 mm)
- * **Minimum Width:** 1-1/4" (31.8 mm)
- * **Maximum Volts:** 480VAC
- * **Maximum Amps:** 10A

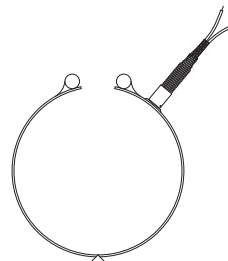


Two-Piece Band

Standard Termination Location: next to same gap on each half; center of width



- * **Minimum Inside Diameter:** 2" (50.8 mm)
- * **Minimum Width:** 1-1/4" (31.75 mm)
- * **Maximum Volts/Amps:** 480VAC/10A each half



One-Piece Expandable Band

Standard Termination Location: next to gap; center of width

- * **Minimum Inside Diameter:** 2-1/2" (63.5 mm)
- * **Minimum Width:** 1-1/4" (31.75 mm)
- * **Maximum Volts/Amps:** 480VAC/10A



Terminations

General Purpose Terminal Boxes: Type C2 and Type C5

Available with any construction or clamping variation. They are a simple & economical way to protect employees from electric shock or prevent electric shorts that can result from exposed wiring on band heater electrical installations.

The Heavy Duty Terminal Boxes have 1/2" knockouts that will accept standard armor cable connectors. They can be field assembled on band heaters that have a center distance between terminal

screws of 7/8". Boxes can be pre-wired with galvanized armor, stainless steel armor, wire braid or plain leads. If a Low Profile Box with cable or leads is required, it is strongly recommended to order it pre-wired by the factory.

The standard leads are 10" of cable or wire braid over 12" of flexible leads. *If longer leads are required, specify when ordering.*

Duraband® Type C2 – Standard Terminal Boxes



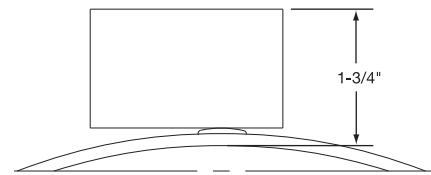
One-Piece Band

Standard Termination Location:
next to gap; center of width

- * **Minimum Inside Diameter:** 2-1/2" (63.5 mm)
- * **Minimum Width:** 1" (25.4 mm) Heater widths between 1" and 2-1/2" require a minimum ID of 5-1/2" or greater.
- * **Maximum Volts/Amps:** 480VAC/25A

Type C2 □ – Standard Box

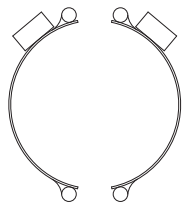
- C2A** – Box only
- C2B** – w/galvanized armor
- C2C** – w/stainless steel armor
- C2D** – w/wire braid



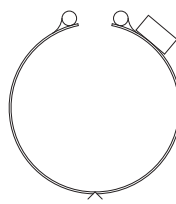
Two-Piece Band

Standard Termination Location:

next to same gap on each half; center of width



- * **Minimum Inside Diameter:** 3" (76.2 mm)
- * **Minimum Width:** 1" (25.4 mm) Heater widths between 1" and 2-1/2" require a minimum ID of 5-1/2" or greater.
- * **Max. Volts/Amps:** 480VAC/25A each half



One-Piece Expandable Band

Standard Termination Location:
next to gap; center of width

- * **Minimum Inside Diameter:** 2-1/2" (63.5 mm)
- * **Minimum Width:** 1" (25.4 mm) Heater widths between 1" and 2-1/2" require a minimum ID of 5-1/2" or greater.
- * **Maximum Volts/Amps:** 480VAC/25A

Duraband Type C5 – Low Profile Terminal Boxes



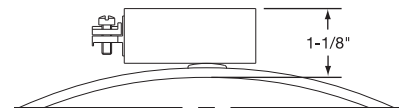
One-Piece Band

Standard Termination Location:
next to gap; center of width

- * **Minimum Inside Diameter:** 2-1/2" (63.5 mm)
- * **Minimum Width:** 1" (25.4 mm) Heater widths between 1" and 2-1/2" require a minimum ID of 5-1/2" or greater.
- * **Maximum Volts/Amps:** 480VAC/25A

Type C5 □ – Low Profile Box

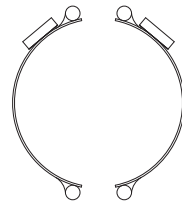
- C5A** – box only
- C5B** – w/galvanized armor
- C5C** – w/SS armor
- C5D** – w/wire braid
- C5J** – w/plain leads



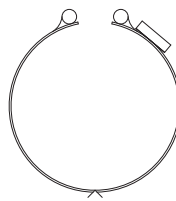
Two-Piece Band

Standard Termination Location:

next to same gap on each half; center of width



- * **Minimum Inside Diameter:** 3" (76.2 mm)
- * **Minimum Width:** 1" (25.4 mm) Heater widths between 1" and 2-1/2" require a minimum ID of 5-1/2" or greater.
- * **Max. Volts/Amps:** 480VAC/25A each half



One-Piece Expandable Band

Standard Termination Location:
next to gap; center of width

- * **Minimum Inside Diameter:** 2-1/2" (63.5 mm)
- * **Minimum Width:** 1" (25.4 mm) Heater widths between 1" and 2-1/2" require a minimum ID of 5-1/2" or greater.
- * **Maximum Volts/Amps:** 480VAC/25A



Duraband®

Quick Disconnect Plugs: Type P1, Type P2, Type P3 and Type P4

Available on any construction or clamping variation. These plug assemblies are highly recommended & should be used whenever possible. The combination of plug & cup assembly along with armor cable covered leads eliminates all live exposed terminals or wiring that can be a potential hazard to employees or machinery.

Type P1 and P3 assemblies are available with a straight or right-

angle plug. Type P2 and P4 plug assemblies have a lower profile and are available with a straight plug only.

To simplify installation, band heaters with these assemblies can be supplied pre-wired, using high temperature lead wires.

The standard leads are 10" of armor cable over 12" of flexible leads. *If longer leads are required, specify when ordering.*

Duraband® Type P1 – High Temperature Quick Disconnect Plugs

Type P1 □

P1K – Cup assembly only

P1L – w/straight plug only

P1M – w/90° plug only

P1N – w/str. plug & galvanized cable

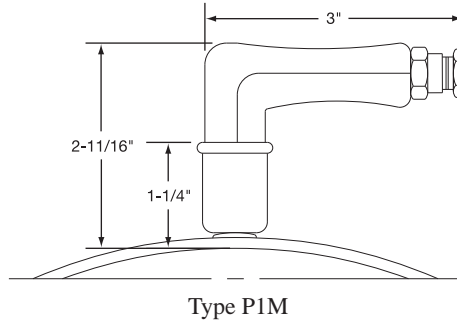
P1O – w/str. plug & SS cable

P1P – w/str. plug & wire braid

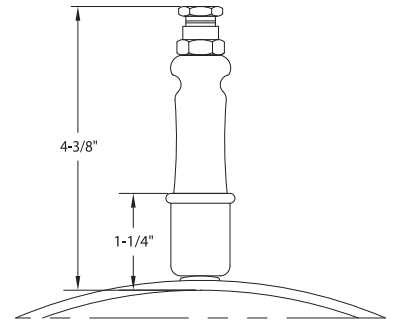
P1Q – w/90° plug & galvanized cable

P1R – w/90° plug & SS cable

P1S – w/90° plug & wire braid



Type P1M



Type P1L

Plug Electrical Ratings

- * 2-Pole 3-Wire Grounding
- * Maximum Volts: 250 VAC
- * Maximum Amps: 16A
- * Maximum Temperature: 572°F (300°C)

Type P1Q shown



One-Piece Band

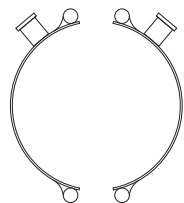
Standard Termination Location:
next to gap; center of width

- * **Minimum Inside Diameter:** 2" (50.8 mm)
- * **Minimum Width:** 1-1/2" (38.1 mm)
If width is between 1-1/2" and 2", minimum diameter is 5-1/2".
If width is greater than 2", minimum diameter is 2".

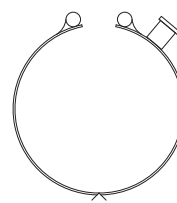


Two-Piece Band

Standard Termination Location:
next to same gap on each half;
center of width



- * **Minimum Inside Diameter:** 2" (50.8 mm)
- * **Minimum Width:** 1-1/2" (38.1 mm)
If width is between 1-1/2" and 2", minimum diameter is 5-1/2".
If width is greater than 2", minimum diameter is 2".



One-Piece Expandable Band

Standard Termination Location:
next to gap; center of width

- * **Minimum Inside Diameter:** 2-1/2" (63.5 mm)
- * **Minimum Width:** 1-1/2" (38.1 mm)
If width is between 1-1/2" and 2", minimum diameter is 5-1/2".
If width is greater than 2", minimum diameter is 2".





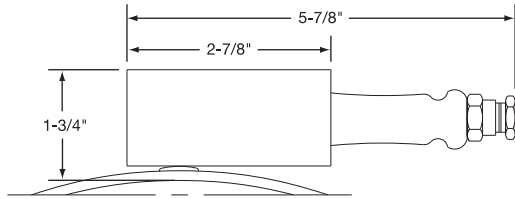
Terminations

Duraband® Type P2 – High Temperature Quick Disconnect Plugs

Continued from previous page...

Type P2 □ – Low Profile Assembly

- P2F** – Low profile assembly only
- P2G** – w/straight plug only
- P2H** – w/str. plug and galvanized cable
- P2J** – w/str. plug and SS cable
- P2K** – w/str. plug and wire braid



Type P2G Shown



Type P2H shown

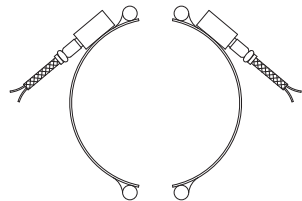
One-Piece Band

Standard Termination Location:
next to gap; center of width

- * **Minimum Inside Diameter:** 3" (76.2 mm)
- * **Minimum Width:** 2-1/2" (63.5 mm)

Plug Electrical Ratings

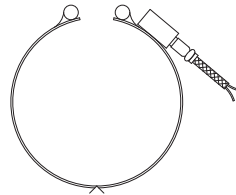
- * **2-Pole 3-Wire Grounding**
- * **Maximum Volts:** 250 VAC
- * **Maximum Amps:** 16A
- * **Maximum Temperature:** 572°F (300°C)



Two-Piece Band

Standard Termination Location:
next to same gap on each half;
center of width

- * **Minimum Inside Diameter:** 3" (76.2 mm)
- * **Minimum Width:** 2-1/2" (63.5 mm)



One-Piece Expandable Band

Standard Termination Location:
next to gap; center of width

- * **Minimum Inside Diameter:** 3" (76.2 mm)
- * **Minimum Width:** 2-1/2" (63.5 mm)

Duraband Type P3 – DIN 49458 A/B Quick Disconnect Plugs

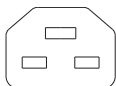
One-Piece Band

Standard Termination Location:
next to gap; center of width

- * **Minimum Inside Diameter:** 3" (76.2 mm)
- * **Minimum Width:** 1-1/2" (38.1 mm)

Plug Electrical Ratings

- * **2-Pole 3-Wire Grounding**
- * **Maximum Volts:** 250 VAC
- * **Maximum Amps:** 16A
- * **Maximum Temperature:** 392°F (200°C)



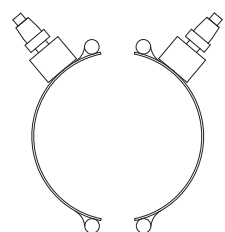
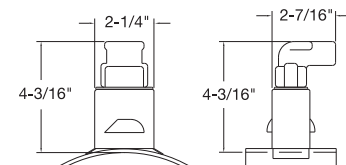
Standard Pin Orientation



Type P3C Shown

Type P3 □ – Vertical Box Assembly

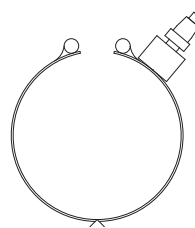
- P3A** – Box assembly only
- P3B** – Box assembly w/straight plug
- P3C** – Box assembly w/right-angle plug only



Two-Piece Band

Standard Termination Location:
next to same gap on each half;
center of width

- * **Minimum Inside Diameter:** 3" (76.2 mm)
- * **Minimum Width:** 1-1/2" (38.1 mm)



One-Piece Expandable Band

Standard Termination Location:
next to gap; center of width

- * **Minimum Inside Diameter:** 3" (76.2 mm)
- * **Minimum Width:** 1-1/2" (38.1 mm)



Quick Disconnect Plugs: Type P1, Type P2, Type P3 and Type P4

Available on any construction or clamping variation. These plug assemblies are highly recommended & should be used whenever possible. The combination of plug & cup assembly along with armor cable covered leads eliminates all live exposed terminals or wiring that can be a potential hazard to employees or machinery.

Type P1 and P3 assemblies are available with a straight or right-

angle plug. Type P2 and P4 plug assemblies have a lower profile and are available with a straight plug only.

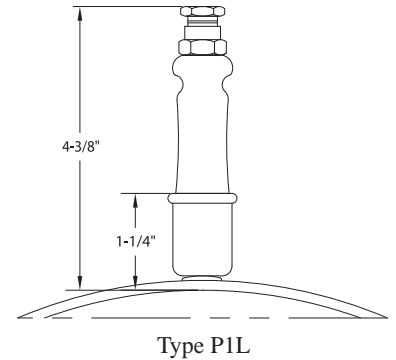
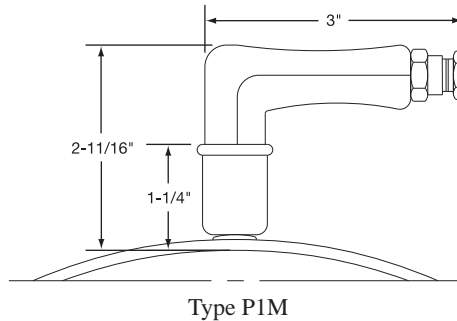
To simplify installation, band heaters with these assemblies can be supplied pre-wired, using high temperature lead wires.

The standard leads are 10" of armor cable over 12" of flexible leads. *If longer leads are required, specify when ordering.*

Duraband® Type P1 – High Temperature Quick Disconnect Plugs

Type P1 □

- P1K** – Cup assembly only
- P1L** – w/straight plug only
- P1M** – w/90° plug only
- P1N** – w/str. plug & galvanized cable
- P1O** – w/str. plug & SS cable
- P1P** – w/str. plug & wire braid
- P1Q** – w/90° plug & galvanized cable
- P1R** – w/90° plug & SS cable
- P1S** – w/90° plug & wire braid



Plug Electrical Ratings

- * 2-Pole 3-Wire Grounding
- * Maximum Volts: 250 VAC
- * Maximum Amps: 16A
- * Maximum Temperature: 572°F (300°C)

One-Piece Band

Standard Termination Location:
next to gap; center of width

- * **Minimum Inside Diameter:** 2" (50.8 mm)
- * **Minimum Width:** 1-1/2" (38.1 mm)

If width is between 1-1/2" and 2", minimum diameter is 5-1/2".
If width is greater than 2", minimum diameter is 2".

Type P1Q shown

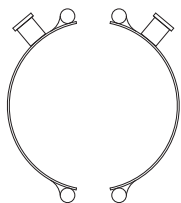


Two-Piece Band

Standard Termination Location:
next to same gap on each half;
center of width

- * **Minimum Inside Diameter:** 2" (50.8 mm)
- * **Minimum Width:** 1-1/2" (38.1)

If width is between 1-1/2" and 2", minimum diameter is 5-1/2".
If width is greater than 2", minimum diameter is 2".

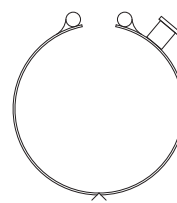


One-Piece Expandable Band

Standard Termination Location:
next to gap; center of width

- * **Minimum Inside Diameter:**
2-1/2" (63.5 mm)
- * **Minimum Width:** 1-1/2" (38.1 mm)

If width is between 1-1/2" and 2", minimum diameter is 5-1/2".
If width is greater than 2", minimum diameter is 2".





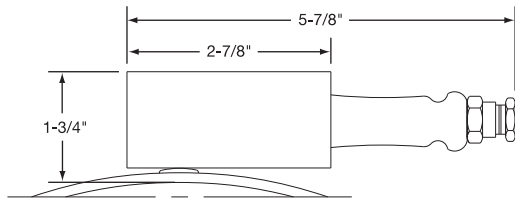
Terminations

Duraband® Type P2 – High Temperature Quick Disconnect Plugs

Continued from previous page...

Type P2 □ – Low Profile Assembly

- P2F** – Low profile assembly only
- P2G** – w/straight plug only
- P2H** – w/str. plug and galvanized cable
- P2J** – w/str. plug and SS cable
- P2K** – w/str. plug and wire braid



Type P2G Shown



Type P2H shown

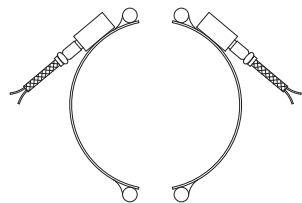
One-Piece Band

Standard Termination Location:
next to gap; center of width

- * **Minimum Inside Diameter:** 3" (76.2 mm)
- * **Minimum Width:** 2-1/2" (63.5 mm)

Plug Electrical Ratings

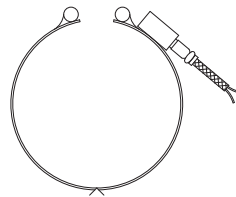
- * **2-Pole 3-Wire Grounding**
- * **Maximum Volts:** 250 VAC
- * **Maximum Amps:** 16A
- * **Maximum Temperature:** 572°F (300°C)



Two-Piece Band

Standard Termination Location:
next to same gap on each half;
center of width

- * **Minimum Inside Diameter:** 3" (76.2 mm)
- * **Minimum Width:** 2-1/2" (63.5 mm)



One-Piece Expandable Band

Standard Termination Location:
next to gap; center of width

- * **Minimum Inside Diameter:** 3" (76.2 mm)
- * **Minimum Width:** 2-1/2" (63.5 mm)

Duraband Type P3 – DIN 49458 A/B Quick Disconnect Plugs

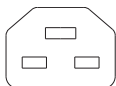
One-Piece Band

Standard Termination Location:
next to gap; center of width

- * **Minimum Inside Diameter:** 3" (76.2 mm)
- * **Minimum Width:** 1-1/2" (38.1 mm)

Plug Electrical Ratings

- * **2-Pole 3-Wire Grounding**
- * **Maximum Volts:** 250 VAC
- * **Maximum Amps:** 16A
- * **Maximum Temperature:** 392°F (200°C)



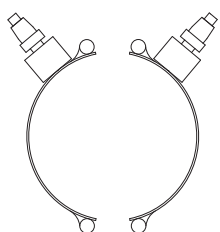
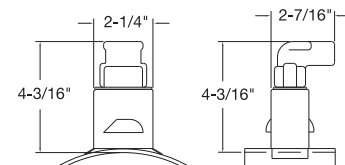
Standard Pin Orientation



Type P3C Shown

Type P3 □ – Vertical Box Assembly

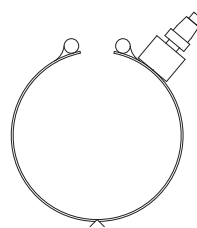
- P3A** – Box assembly only
- P3B** – Box assembly w/straight plug
- P3C** – Box assembly w/right-angle plug only



Two-Piece Band

Standard Termination Location:
next to same gap on each half;
center of width

- * **Minimum Inside Diameter:** 3" (76.2 mm)
- * **Minimum Width:** 1-1/2" (38.1 mm)



One-Piece Expandable Band

Standard Termination Location:
next to gap; center of width

- * **Minimum Inside Diameter:** 3" (76.2 mm)
- * **Minimum Width:** 1-1/2" (38.1 mm)

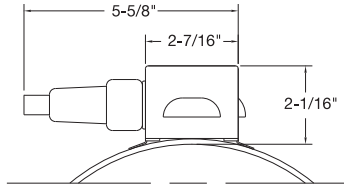


Duraband® Type P4 – DIN 49458 A/B Quick Disconnect Plugs

Type P4 □ – Horizontal Box Assembly

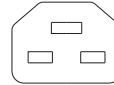
P4A – Box assembly only

P4B – Box assembly with straight plug



Plug Electrical Ratings

- * 2-Pole 3-Wire Grounding
- * Maximum Volts: 250 VAC
- * Maximum Amps: 16A
- * Maximum Temperature: 392°F (200°C)



Standard Pin Orientation

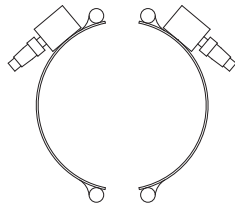


Type P4C shown

One-Piece Band

Standard Termination Location:
next to gap; center of width

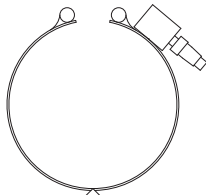
- * Minimum Inside Diameter: 3" (76.2 mm)
- * Minimum Width: 2-1/2" (63.5 mm)



Two-Piece Band

Standard Termination Location:
next to same gap on each half;
center of width

- * Minimum Inside Diameter: 3" (76.2 mm)
- * Minimum Width: 2-1/2" (63.5 mm)



One-Piece Expandable Band

Standard Termination Location:
next to gap; center of width

- * Minimum Inside Diameter: 2-1/2" (63.5 mm)
- * Minimum Width: 3" (76.2 mm)



Duraband® and Mica Insulated Heater Special Custom Designs

Variety and Versatility in Mica Insulated Heaters. No other heater band has the design and manufacturing flexibility of mica insulated heaters. Tempco's flexible CNC sheet metal fabricating machines, custom developed engineering programs with built-in intelligence, and experienced and talented engineering staff allow us to push the limits on band heater designs.

Throughout our catalog we show Tempco's standard specifications and most popular designs. However, as a custom heating element manufacturer, we recognize that many applications require non-standard and unique designs.

At Tempco, we are constantly challenged by our customers to solve their heating applications. We have the experience, technical knowledge and manufacturing capability to solve all your heating problems with unique heater designs. You should use

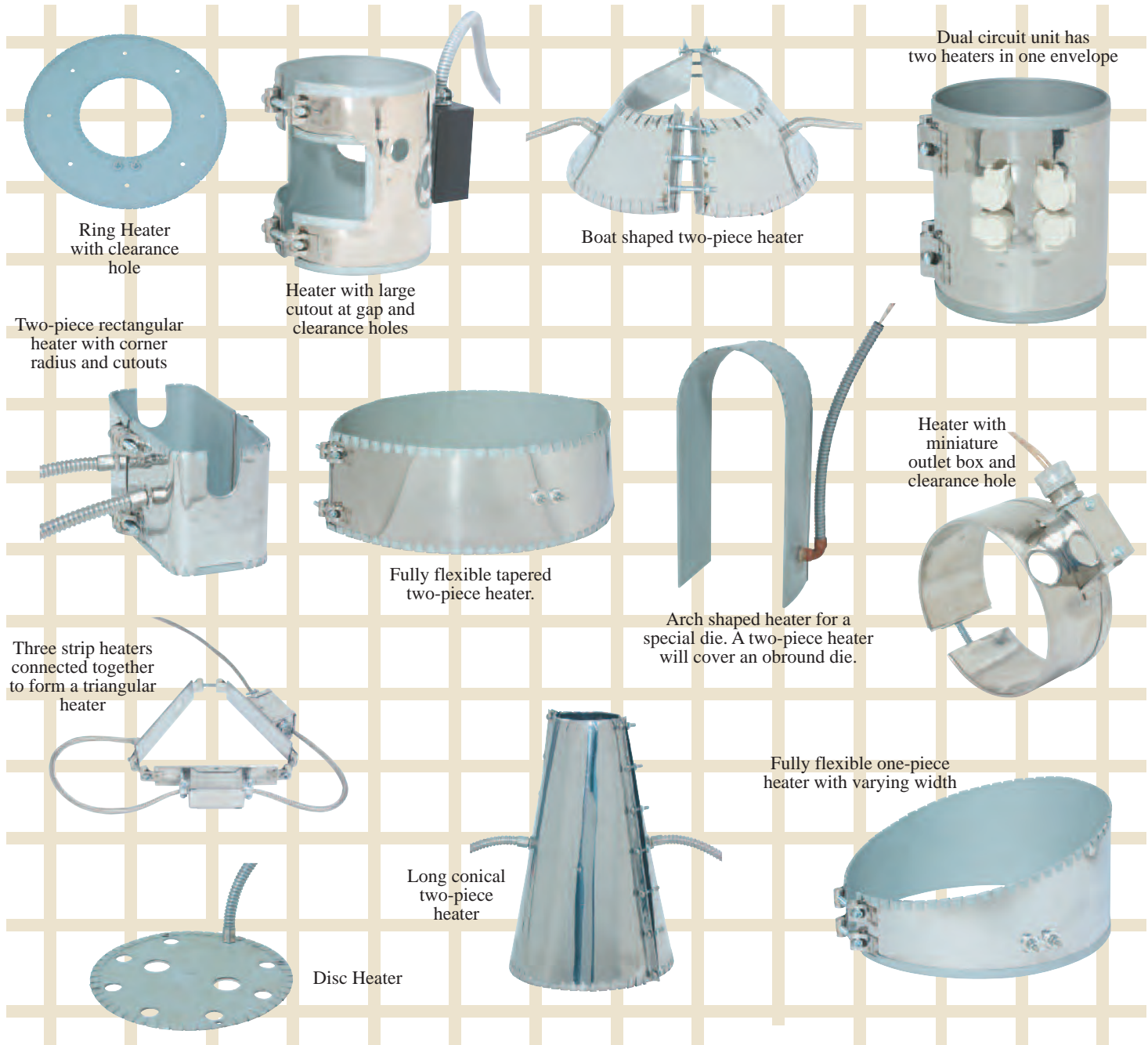
Tempco's talent and capabilities to your benefit to solve your specific heating problem in an expeditious and cost effective manner.

The following pictures show some of the heater designs that we have developed for special applications. Next time, when you have a special application and you want someone to work with you and "think outside the box" to solve your specific heating application, call Tempco.

We haven't seen all heating applications, but most likely our experienced staff has seen and solved more heating problems than you have seen.

Use our knowledge and experience to work for you. Challenge us! You will be glad you did.

We Welcome Your Inquiries.



Ring Heater with clearance hole

Heater with large cutout at gap and clearance holes

Boat shaped two-piece heater

Dual circuit unit has two heaters in one envelope

Two-piece rectangular heater with corner radius and cutouts

Fully flexible tapered two-piece heater.

Arch shaped heater for a special die. A two-piece heater will cover an obround die.

Heater with miniature outlet box and clearance hole

Three strip heaters connected together to form a triangular heater

Fully flexible one-piece heater with varying width

Long conical two-piece heater

Disc Heater



"Sinuated" Element Construction for Commercial OEM Applications



An alternative to wound ribbon core heaters is the sinuated heater element. In this type of construction, the heating element resistance wire is sinuated, or "formed" back and forth without a middle core layer of mica insulation. The heating element is then sandwiched between two layers of specially selected mica insulation to provide excellent thermal conductivity and dielectric strength.

The sinuated formed element lends itself to lower temperature and watt density applications where high watt density construction is not required.

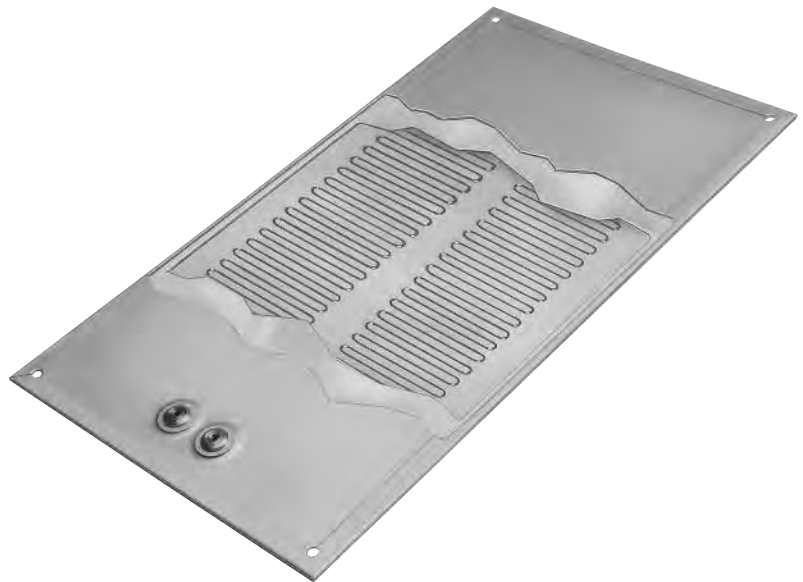
Typical Applications (Cylindrical Surfaces)

- *Food and Candy Extruders*
- *Vending Machines*
- *Commercial Food Equipment*
- *Food Service Warming Items*
- *Laboratory and Scientific Apparatus*
- *Photographic Equipment*
- *Incubators*

The Solution for Low to Medium Temperature Cylindrical and Flat Surface Heating Applications

Typical Applications (Flat Surfaces)

- *Laminating*
- *Food Service Warming Items*
- *Radiant Heating*
- *Incubators*



This design is widely used in food service and the farming industry. By careful selection of economical materials used for these low temperature applications, significant cost savings can be realized compared to standard mica heaters.

Contact Tempco for Complete Product Details.



Installation RECOMMENDATIONS

1. Disconnect electric power to the machine and/or heaters prior to installing or replacing heaters.
 2. Do not install heaters in areas where combustible gases, vapor or dust is present.
 3. Use as many narrow band heaters as the application will permit. 1-1/2" through 3" wide heaters are recommended.
 4. Using a heater that closely matches the wattage requirements will decrease the frequency of cycling and temperature overshoot, thereby increasing the life of the heater.
 5. Make certain that all barrel surfaces are clean and have a smooth finish. Any contaminants or imperfections on the surface can cause premature heater failure.
 6. Tempco expandable type Mica Band Heaters may be opened once at the gap to fit on the barrel. Do not open these heaters beyond their specified heater diameter.
- CAUTION** Do not open Tempco One-Piece Non-Expandable Type mica band Heaters. Opening of these heaters can damage Mica Insulation and will create electrical short circuits.
7. Position heater bands on the barrel.
 8. Securely tighten heater bands around the barrel. Clamping force must be equally distributed on heaters with more than one set of clamping brackets.
Recommended clamping bolt torque is 10 ft./lbs.
 9. For heaters with screw terminals, remove the top nut and flat washers from the power screw terminals. Do not remove or loosen the bottom nut on the power screw terminals. The bottom nut is tightened to 60 in./lbs. at the factory. A loose bottom nut may cause premature heater failure.

Installation Accessories Available

IMMEDIATE DELIVERY!

- * High Temperature Terminal Lugs
- * Igloo™ Ceramic Terminal Covers
- * UL Listed Plugs
- * High Temperature Lead Wire 842°F (450°C)
- * Armor Cable
- * Stainless Steel Braid
- * High Temperature Sleeving
- * High Temperature Mica Insulated Wiring Harnesses 842°F (450°C)
- * Thermocouples
- * Temperature Controllers
- * High Temperature Fiberglass Tape

10. All electrical wiring of heater bands should be done by a qualified electrician.
 - a. Use only Stainless Steel or other high temperature lugs to prevent material degradation when exposed to high temperatures over a prolonged period of time.



DO NOT USE COPPER OR PLATED COPPER LUGS.

- b. Use only lead wire with high temperature insulation and proper gauge size.
 - c. When connecting power leads to screw terminals make certain that barrels of terminal lugs are not facing down toward the heater case, which will create a short circuit.
Tighten the top nut to 30 in./lbs.
 - d. Make certain power lead wires do not make contact with hot heater surface to avoid degradation of lead wire, as this can cause electrical short circuits.
 - e. Make sure the voltage input to the heater bands does not exceed the voltage rating that is stamped on the heater band.
 - f. It is recommended that an amperage reading is taken for each heater to verify proper wiring.
(Amps = Watts/Volts)

11. Insulate all live electrical wires per applicable safety standards.
12. Begin heater band re-tightening procedure. Be sure to wear protective gloves.
 - a. Energize heater bands and allow the heater to reach 300°F (149°C). This usually takes between 3 and 5 minutes.
 - b. Turn off power and immediately re-tighten the heater bands to 10 ft./lbs. Turn power back on.
13. Install shrouds around the machine to meet applicable safety requirements.
14. Once installed, check surroundings to make sure that contaminants won't get on the heater while the unit is in operation. Accumulation of contaminants on heaters can cause premature heater failure.
15. Insulating blanket installations must have band heater retightening sequence (#12) completed before blanket installation. Lead wires must exit the insulation blanket as soon as possible; do not entrap lead wires between heater sheath and insulation blanket.



It is imperative that upon start-up of new machines at customer facilities, all of the aforementioned parameters are double checked by qualified field service personnel.

Exposed electrical wiring on band heater installations is a violation of Electrical Safety Codes including O.S.H.A.

Band Heaters



Duraband Nozzle Band Heaters

STOCK Replacement Band Heaters for Plastic Injection Molding Machines



**COST EFFECTIVE WITHOUT
COMPROMISING QUALITY**

NHL Mica Insulated Nozzle Heater

ID in	Width in	Watts	Watt Density W/in ²	Part Number	
				120V	240V
7/8	1	85	49	NHL00130	NHL00131
1	1	100	47	NHL00100	NHL00101
1	1	125	58	NHL00132	NHL00133
1	1 1/2	150	47	NHL00102	NHL00103
1	1 1/2	200	62	NHL00104	NHL00105
1	2	250	58	NHL00106	NHL00107
1 1/4	3/8	100	55	NHL00154	NHL00155
1 1/4	1	175	60	NHL00108	NHL00109
1 1/4	1 1/4	125	34	NHL00156	NHL00157
1 1/4	1 1/4	250	68	NHL00158	NHL00159
1 1/4	1 1/2	250	57	NHL00110	NHL00111
1 1/2	7/8	100	31	NHL00160	NHL00161
1 1/2	1	100	27	NHL00162	NHL00163
1 1/2	1	150	40	NHL00112	NHL00113
1 1/2	1	200	54	NHL00114	NHL00115
1 1/2	1 1/4	250	54	NHL00164	NHL00165
1 1/2	1 1/2	150	27	NHL00134	NHL00135
1 1/2	1 1/2	200	36	NHL00116	NHL00117
1 1/2	1 1/2	250	45	NHL00136	NHL00137
1 1/2	1 1/2	275	49	NHL00118	NHL00119
1 1/2	1 1/2	300	54	NHL00138	NHL00139
1 1/2	2	300	40	NHL00120	NHL00121
1 1/2	2 1/2	350	38	NHL00122	NHL00123
1 1/2	2 1/2	400	43	NHL00166	NHL00167
1 1/2	3	350	31	NHL00168	NHL00169
1 1/2	3	400	36	NHL00124	NHL00125
1 1/2	3	500	45	NHL00170	NHL00171
1 3/4	1	175	39	NHL00172	NHL00173
1 3/4	1 1/2	200	30	NHL00174	NHL00175
1 3/4	1 1/2	225	33	NHL00140	NHL00141
1 3/4	1 1/2	250	37	NHL00176	NHL00177
1 3/4	1 1/2	300	44	NHL00178	NHL00179
1 3/4	3	500	37	NHL00180	NHL00181
2	1	200	38	NHL00182	NHL00183
2	1 1/2	300	38	NHL00142	NHL00143
2	2	400	38	NHL00144	NHL00145
2 1/8	1	100	18	NHL00126	NHL00127
2 1/8	2	200	18	NHL00128	NHL00129
2 1/4	1	225	37	NHL00146	NHL00147
2 3/8	1	250	39	NHL00148	NHL00149
2 1/2	1	300	44	NHL00150	NHL00151
2 1/2	1 1/2	200	19	NHL00152	NHL00153
2 1/2	1 1/2	350	34	NHL00186	NHL00187

In Stock!

- * Economically Priced
- * Type NHL with 12" leads and 2" of protective sleeving
- * Supplied with low profile clamping strap

All Items Available from Stock



Note: For normal plastic processing Tempco recommends Watt Densities under 55 W/in².



STOCK Replacement Band Heaters for Plastic Injection Molding Machines



**COST EFFECTIVE WITHOUT
COMPROMISING QUALITY**

NHW Mica Insulated Nozzle Heater

ID in	Width in	Watts	Watt Density W/in ²	Part Number	
				120V	240V
7/8	1	85	49	NHW00130	NHW00131
1	1	100	47	NHW00100	NHW00101
1	1	125	58	NHW00132	NHW00133
1	1½	150	47	NHW00102	NHW00103
1	1½	200	62	NHW00104	NHW00105
1	2	250	58	NHW00106	NHW00107
1¼	1	175	60	NHW00108	NHW00109
1¼	1¼	125	34	NHW00156	NHW00157
1¼	1¼	250	68	NHW00158	NHW00159
1¼	1½	250	57	NHW00110	NHW00111
1½	7/8	100	31	NHW00160	NHW00161
1½	1	100	27	NHW00162	NHW00163
1½	1	150	40	NHW00112	NHW00113
1½	1	200	54	NHW00114	NHW00115
1½	1¼	250	54	NHW00164	NHW00165
1½	1½	150	27	NHW00134	NHW00135
1½	1½	200	36	NHW00116	NHW00117
1½	1½	250	45	NHW00136	NHW00137
1½	1½	275	49	NHW00118	NHW00119
1½	1½	300	54	NHW00138	NHW00139
1½	2	300	40	NHW00120	NHW00121
1½	2½	350	38	NHW00122	NHW00123
1½	2½	400	43	NHW00166	NHW00167
1½	3	400	36	NHW00124	NHW00125
1½	3	500	45	NHW00170	NHW00171
1¾	1½	200	30	NHW00174	NHW00175
1¾	1½	225	33	NHW00140	NHW00141
1¾	1½	250	37	NHW00176	NHW00177
1¾	1½	300	44	NHW00178	NHW00179
2	1½	300	38	NHW00142	NHW00143
2	2	400	38	NHW00144	NHW00145
2½	1	100	18	NHW00126	NHW00127
2½	1	200	35	NHW00184	NHW00185
2½	2	200	18	NHW00128	NHW00129
2¼	1	225	37	NHW00146	NHW00147
2¾	1	250	39	NHW00148	NHW00149
2½	1	300	44	NHW00150	NHW00151
2½	1½	200	19	NHW00152	NHW00153
2½	1½	350	34	NHW00186	NHW00187
2¾	1½	400	35	NHW00188	NHW00189

In Stock!

- * Economically Priced
- * Type NHW with 12" leads and 10" SS wire braid
- * Supplied with low profile clamping strap

All Items Available from Stock

Ordering Information

See page 1-48



Note: For normal plastic processing Tempco recommends Watt Densities under 55 W/in².

Band Heaters



Duraband Nozzle Band Heaters

Stock and Standard (Non-Stock) Replacement Mica Insulated Band Heaters for Plastic Injection Molding Machines

Stock Items Are Shown In **RED**



Fig. A

ID		Width		Wattage	Fig.	Tempco Part Number	
in	mm	in	mm			120V	240V
1¼	31.8	1¾	30.2	125	A	—	MBH00033
1½	38.1	1	25.4	150	A	MBH00031	MBH00035
1½	38.1	1	25.4	150	A	—	MBH00036 ①
2⅞	58.7	1¾	36.5	300	A	—	MBH00038
2⅞	58.7	1¾	36.5	300	A	—	MBH00039 ①

① Heaters have built-in Type J Thermocouple

Stock Items Are Shown In **RED**

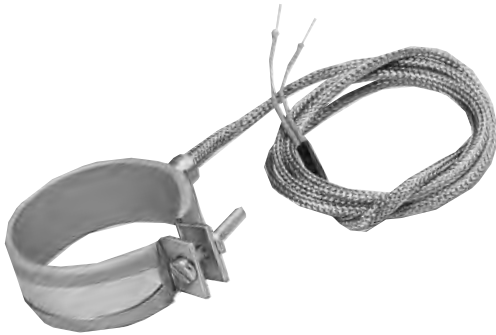


Fig. B

ID		Width		Wattage	Watt Density		Fig.	Part Number	
in	mm	in	mm		W/in ²	W/cm ²		120 Volts	240 Volts
1½	38.1	1	25.4	150	40	6.3	B	MBH00030	MBH00034
1¾	44.5	1	25.4	175	39	6.0	B	MBH00003	MBH00012
2	50.8	1	25.4	200	38	5.9	B	MBH00004	MBH00013
2¼	57.2	1	25.4	175	29	4.5	B	MBH00005	—
2¼	57.2	1½	38.1	300	33	5.1	B	—	MBH00037
2½	63.5	1	25.4	250	36	5.7	B	MBH00006	MBH00014
3	76.2	1	25.4	200	24	3.7	B	MBH00007	MBH00015
3½	88.9	1	25.4	300	30	4.7	B	MBH00009	MBH00016

Stock Items Are Shown In **RED**



Fig. C

ID		Width		Wattage	Watt Density		Fig.	Part Number
in	mm	in	mm		W/in ²	W/cm ²		240 V
1½	38.1	1½	38.1	275	49	7.7	C	MBH00019
1½	38.1	1¾	44.5	250	38	6.0	C	MBH00020
1½	38.1	2½	63.5	400	43	6.7	C	MBH00021
1½	38.1	3	76.2	450	40	6.3	C	MBH00022
1½	38.1	4½	114.3	600	36	5.6	C	MBH00023
1¾	44.5	6	152.4	800	30	4.6	C	MBH00024
2⅞	54.0	1⅞	23.8	215	40	6.3	C	MBH00025
2⅞	58.7	1⅞	23.8	260	44	6.9	C	MBH00026
2⅞	58.7	1⅞	34.9	240	28	4.3	C	MBH00027
2¼	69.9	1½	38.1	260	23	3.5	C	MBH00028

Design Features:

- * All heaters have 24" high temperature leads with 22" stainless steel overbraid

Ordering Information

See page 1-48



Stock and Standard (Non-Stock) Mica Insulated Band Heaters for Plastic Injection Molding Machines

Design Features:

- * All heaters have 24" high temperature leads with 22" stainless steel overbraid — **Type W3**
- * Heaters less than 1-1/2" wide have separate straps — **Type SE**
- * Designed as one-piece expandable type, enables you to open up the heater to the diameter of the barrel for easy installation.



Stock Items Are Shown In RED

ID		Width		Wattage	Watt Density		Style	Part Number		
in	mm	in	mm		W/in ²	W/cm ²		120V	240V	480V
2¾	69.9	3½	88.9	600	22	3.5	NE	MBH00040	—	—
3	76.2	1	25.4	200	24	3.7	SE	MBH00041	MBH00054	—
3	76.2	1	25.4	250	30	4.7	SE	MBH00042	MBH00055	—
3	76.2	1	25.4	300	36	5.6	SE	MBH00043	MBH00056	—
3	76.2	1	25.4	400	48	7.4	SE	MBH00044	MBH00057	—
3	76.2	1½	38.1	500	40	6.1	NE	MBH00045	MBH00058	—
3	76.2	2½	63.5	300	14	2.2	NE	—	MBH00059	—
3½	88.9	¾	15.9	200	32	5.0	SE	MBH00046	MBH00060	—
3½	88.9	1	25.4	200	20	3.1	SE	MBH00047	—	—
3½	88.9	1½	38.1	500	33	5.2	NE	—	MBH00061	—
4	101.6	2	50.8	625	27	4.2	NE	MBH00048	MBH00062	MBH00066
4	101.6	3	76.2	500	14	2.2	NE	MBH00049	—	—
4	101.6	4	101.6	1250	27	4.2	NE	MBH00050	MBH00063	MBH00067
4½	114.3	1	25.4	300	23	3.5	SE	MBH00051	—	—
4½	114.3	2	50.8	700	27	4.1	NE	—	MBH00064	MBH00068
4½	114.3	4	101.6	700	13	2.1	NE	MBH00052	—	—
4½	114.3	4	101.6	1400	27	4.1	NE	MBH00053	MBH00065	MBH00069

Design Features:

- * All heaters have 24" high temperature leads — **Type L2**
- * Heaters less than 1-1/2" wide have separate straps — **Type SE**
- * Designed as one-piece expandable type, enables you to open up the heater to the diameter of the barrel for easy installation.



Stock Items Are Shown In RED

ID		Width		Wattage	Watt Density		Style	Part Number		
in	mm	in	mm		W/in ²	W/cm ²		120V	240V	480V
3	76.2	1	25.4	200	24	3.7	SE	MBH00070	MBH00078	—
3	76.2	1	25.4	250	30	4.6	SE	MBH00071	MBH00079	—
3	76.2	1	25.4	300	36	5.5	SE	MBH00072	MBH00080	—
3	76.2	1	25.4	400	47	7.4	SE	MBH00073	MBH00081	—
3	76.2	1½	38.1	400	32	4.9	NE	MBH00074	MBH00082	—
3	76.2	1½	38.1	450	36	5.5	NE	MBH00075	MBH00083	—
3	76.2	1½	38.1	500	40	6.1	NE	MBH00076	MBH00084	—
3	76.2	2	50.8	500	30	4.6	NE	MBH00077	MBH00085	—
3½	88.9	1	25.4	400	40	6.2	SE	—	MBH00086	—
3½	88.9	1½	38.1	250	17	2.6	NE	—	MBH00087	MBH00093
3½	88.9	2	50.8	650	33	5.0	NE	—	MBH00088	—
4½ ₁₆	125.4	2½	63.5	720	20	3.1	NE	—	MBH00089	MBH00094
5½	139.7	2½	63.5	950	23	3.6	NE	—	MBH00090	MBH00095
5¾	149.2	1½	38.1	675	26	4.0	NE	—	MBH00091	MBH00096
7½	190.5	1½	38.1	1000	30	4.6	NE	—	MBH00092	MBH00097

Band Heaters



Duraband Barrel Band Heaters

Stock and Standard (Non-Stock) Mica Insulated Band Heaters for Plastic Injection Molding Machines



Design Features:

- * All heaters have 24" high temperature leads with 22" stainless steel overbraid — **Type W1**
- * Heaters less than 1-1/2" wide have separate straps — **Type SE**
- * Designed as one-piece expandable type, enables you to open up the heater to the diameter of the barrel for easy installation.

Stock Items Are Shown In **RED**

ID		Width		Wattage	Watt Density		Style	Part Number	
in	mm	in	mm		W/in ²	W/cm ²		120V	240V
2½	63.5	1½	38.1	300	29	4.5	NE	MBH00098	—
3	76.2	1	25.4	300	36	5.6	SE	MBH00099	MBH00108
3	76.2	1½	38.1	500	40	6.2	NE	MBH00100	MBH00109
3	76.2	2	50.8	500	30	4.6	NE	MBH00101	MBH00110
3¾	79.4	2	50.8	450	26	4.0	NE	—	MBH00111
3¾	82.6	2	50.8	400	22	3.4	NE	—	MBH00112
3¾	88.9	1½	38.1	550	37	5.7	NE	—	MBH00113
3½	88.9	2	50.8	600	30	4.7	NE	—	MBH00114
3½	88.9	3	76.2	300	10	1.6	NE	—	MBH00115
3½	88.9	3	76.2	625	21	3.2	NE	—	MBH00116
3¾	95.3	1½	38.1	600	37	5.8	NE	MBH00102	MBH00117
3¾	95.3	2½	63.5	850	32	4.9	NE	MBH00103	MBH00118
4	101.6	1	25.4	550	48	7.4	SE	—	MBH00119
4	101.6	1½	38.1	550	32	4.9	NE	—	MBH00120
4¾	104.8	1	25.4	400	33	5.2	SE	MBH00104	—
4½	114.3	1	25.4	550	42	6.5	SE	—	MBH00121
4½	114.3	2	50.8	800	30	4.7	NE	—	MBH00122
4¾	120.7	¾	19.1	150	14	2.2	SE	—	MBH00123
4¾	123.8	1½	38.1	900	42	6.5	NE	—	MBH00124
5	127.0	1½	38.1	700	32	4.9	NE	—	MBH00125
5	127.0	1¾	44.5	600	23	3.6	NE	—	MBH00126
5	127.0	2	50.8	950	32	5.0	NE	—	MBH00127
5	127.0	2½	63.5	1000	27	4.2	NE	—	MBH00128
5½	139.7	1	25.4	550	34	5.2	SE	—	MBH00129
5½	139.7	1½	38.1	500	20	3.2	NE	—	MBH00130
5½	139.7	1½	38.1	900	37	5.7	NE	—	MBH00131
5½	139.7	2	50.8	500	15	2.4	NE	—	MBH00132
5½	139.7	2¾	69.9	620	14	2.1	NE	—	MBH00133
5½	139.7	3	76.2	1750	36	5.6	NE	—	MBH00134
6	152.4	1	25.4	300	17	2.6	SE	MBH00105	—
6	152.4	1½	38.1	500	19	2.9	NE	—	MBH00135
6	152.4	1½	38.1	850	32	4.9	NE	—	MBH00136
6¾	155.6	1	25.4	600	33	5.1	SE	MBH00106	—
6¾	158.8	2	50.8	500	13	2.1	NE	—	MBH00137
6½	165.1	1½	38.1	750	26	4.0	NE	—	MBH00138
7	177.8	1	25.4	550	26	4.1	SE	—	MBH00139
7½	190.5	2	50.8	1500	36	5.6	NE	—	MBH00140
8¾	206.4	2	50.8	1200	38	5.9	NE	MBH00107	—
10	254.0	2	50.8	2000	41	6.4	NE	—	MBH00141

Ordering Information

See page 1-48



Stock and Standard (Non-Stock) Mica Insulated Band Heaters for Plastic Injection Molding Machines



Optional Igloo™ ceramic covers can fully insulate any standard #8 or #10 terminal lugs used for electrical hook-ups. See page I-33.

Design Features:

- * Features unbreakable 10-32 screw terminals.
- * Larger heaters (dia. 2-1/2" or greater) are designed as one-piece expandable type, enabling you to open up the heater to the diameter of the barrel for easy installation.
- * Heaters less than 1-1/2" wide have separate straps — **Type SE**

Stock Items Are Shown In **RED**

ID	Width		Wattage	Watt Density		Style	Term.	Part Number			
	in	mm		W/in ²	W/cm ²			120V	240V	480V	
1½	38.1	1	25.4	150	40	6.3	SB	T2	—	MBH00170	—
1½	38.1	1½	38.1	250	45	7.0	NB	T2	—	MBH00171	—
1½	38.1	2	50.8	300	40	6.3	NB	T2	—	MBH00172	—
1¾	44.5	1	25.4	175	39	6.0	SB	T2	—	MBH00173	—
1¾	44.5	1½	38.1	250	37	5.7	NB	T2	—	MBH00174	—
1¾	44.5	1½	38.1	300	44	6.9	NB	T2	—	MBH00175	—
1⅞	47.6	1	25.4	200	41	6.3	SB	T2	—	MBH00176	—
2	50.8	1½	38.1	300	38	5.9	NB	T2	MBH00142	MBH00177	—
2¼	57.2	1	25.4	250	41	6.4	SB	T2	MBH00143	MBH00178	—
2¼	57.2	2	50.8	525	43	6.7	NB	T2	—	MBH00179	—
2½	60.3	1	25.4	100	15	2.4	SB	T2	—	MBH00180	—
2½	60.3	1	25.4	250	39	6.0	SB	T2	—	MBH00181	—
2½	60.3	2½	63.5	450	28	4.3	NB	T3	MBH00144	—	—
2½	63.5	1	25.4	225	33	5.1	SE	T2	—	MBH00182	—
2½	63.5	1	25.4	250	36	5.7	SE	T2	—	MBH00183	—
2½	63.5	1	25.4	275	40	6.2	SE	T2	—	MBH00184	—
2½	63.5	1½	38.1	300	29	4.5	NE	T2	MBH00145	MBH00185	—
2½	63.5	1½	38.1	350	34	5.3	NE	T2	MBH00146	MBH00186	—
2½	63.5	2½	60.3	550	34	5.2	NE	T2	—	MBH00187	—
2½	63.5	2½	73.0	650	33	5.1	NE	T3	—	MBH00188	—
2½	63.5	4	101.6	850	31	4.8	NE	T3	—	MBH00189	—
3	76.2	1	25.4	200	24	3.7	SE	T2	MBH00147	MBH00190	—
3	76.2	1	25.4	250	30	4.6	SE	T2	MBH00148	MBH00191	—
3	76.2	1	25.4	300	36	5.5	SE	T2	—	MBH00192	—
3	76.2	1	25.4	350	42	6.4	SE	T2	—	MBH00193	—
3	76.2	1	25.4	400	47	7.4	SE	T2	MBH00149	MBH00194	MBH00348
3	76.2	1½	38.1	400	32	4.9	NE	T2	MBH00150	MBH00195	—
3	76.2	1½	38.1	450	36	5.5	NE	T2	—	MBH00196	—
3	76.2	1½	38.1	500	40	6.1	NE	T2	MBH00151	MBH00197	—
3	76.2	2	50.8	450	27	4.1	NE	T2	—	MBH00198	—
3	76.2	2	50.8	500	30	4.6	NE	T2	—	MBH00199	—
3	76.2	2½	63.5	650	31	4.8	NE	T3	—	MBH00200	—
3⅞	79.4	1	25.4	300	34	5.3	SE	T2	—	MBH00201	—
3⅞	79.4	1	25.4	400	45	7.0	SE	T2	MBH00152	MBH00202	—
3⅞	79.4	1½	38.1	400	30	4.7	NE	T2	—	MBH00203	—
3¾	82.6	1½	38.1	400	29	4.5	NE	T2	MBH00153	MBH00204	—
3½	88.9	1	25.4	300	30	4.7	SE	T2	MBH00154	MBH00205	—
3½	88.9	1½	38.1	325	22	3.4	NE	T2	—	MBH00206	—
3½	88.9	1½	38.1	400	27	4.1	NE	T2	MBH00155	—	—
3½	88.9	1½	38.1	500	33	5.2	NE	T2	MBH00156	MBH00207	—
3½	88.9	2	50.8	325	16	2.5	NE	T2	—	MBH00208	—
3½	88.9	2	50.8	500	25	3.9	NE	T2	MBH00157	—	—
3½	88.9	2	50.8	650	33	5.0	NE	T2	—	MBH00209	—
3½	88.9	2½	63.5	750	30	4.7	NE	T3	—	MBH00210	—
3½	88.9	3	76.2	1000	33	5.2	NE	T3	—	MBH00211	—
3⅞	90.5	2⅞	60.3	685	28	4.4	NE	T2	—	MBH00212	—
3⅞	92.2	1½	38.1	625	40	6.2	NE	T2	—	MBH00213	—
3¾	95.3	1	25.4	350	32	5.0	SE	T2	MBH00158	MBH00214	—
3¾	95.3	1½	38.1	500	31	4.8	NE	T2	—	MBH00215	—
3¾	95.3	1½	38.1	700	43	6.7	NE	T2	—	MBH00216	—
3¾	95.3	2½	63.5	850	32	4.9	NE	T3	MBH00159	MBH00217	—
3⅞	98.4	1½	38.1	550	33	5.1	NE	T2	—	MBH00218	—

Band Heaters



Duraband Barrel Band Heaters

Stock and Standard (Non-Stock) Mica Insulated Band Heaters for Plastic Injection Molding Machines

Continued from previous page...

ID		Width		Wattage	Watt Density		Style	Term.	Part Number		
in	mm	in	mm		W/in ²	W/cm ²			120V	240V	480V
3/8	98.4	2	50.8	750	34	5.2	NE	T2	—	MBH00219	—
3 1/16	100.0	2	50.8	600	26	4.1	NE	T2	—	MBH00220	—
4	101.6	1	25.4	400	35	5.4	SE	T2	MBH00160	MBH00221	—
4	101.6	1 1/2	38.1	400	23	3.6	NE	T2	—	MBH00222	—
4	101.6	1 1/2	38.1	550	32	4.9	NE	T2	—	MBH00223	—
4	101.6	1 1/2	38.1	625	36	5.6	NE	T2	—	MBH00224	MBH00349
4	101.6	1 1/2	38.1	750	43	6.7	NE	T2	—	MBH00225	—
4	101.6	2	50.8	550	24	3.7	NE	T2	MBH00161	MBH00226	—
4	101.6	2	50.8	800	35	5.4	NE	T2	—	MBH00227	—
4	101.6	2 1/4	57.2	900	35	5.4	NE	T2	—	MBH00228	—
4	101.6	2 1/2	63.5	1000	35	5.4	NE	T3	—	MBH00229	—
4	101.6	4	101.6	1250	27	4.2	NE	T3	—	MBH00230	—
4 1/16	109.5	3 1/2	88.9	1210	28	4.3	NE	T3	—	MBH00231	—
4 1/2	114.3	1	25.4	350	27	4.1	SE	T2	MBH00162	MBH00232	—
4 1/2	114.3	1 1/2	38.1	350	18	2.8	NE	T2	—	MBH00233	—
4 1/2	114.3	1 1/2	38.1	400	20	3.1	NE	T2	—	MBH00235	—
4 1/2	114.3	1 1/2	38.1	650	33	5.1	NE	T2	—	MBH00236	—
4 1/2	114.3	2	50.8	500	19	2.9	NE	T2	MBH00163	MBH00237	—
4 1/2	114.3	2	50.8	700	27	4.1	NE	T2	MBH00164	MBH00238	—
4 1/2	114.3	2 1/2	63.5	1000	30	4.7	NE	T3	MBH00165	MBH00239	—
4 3/4	120.7	1 1/2	38.1	600	29	4.5	NE	T2	—	MBH00242	MBH00350
4 3/4	120.7	1 1/2	38.1	650	31	4.8	NE	T2	—	MBH00243	—
4 3/4	120.7	3	76.2	1100	26	4.1	NE	T3	—	MBH00244	MBH00351
4 3/8	123.8	1 1/2	38.1	900	42	6.5	NE	T2	—	MBH00245	—
4 7/8	123.8	2	50.8	650	23	3.5	NE	T2	—	MBH00246	—
4 7/8	123.8	2	50.8	760	27	4.1	NE	T2	—	MBH00247	MBH00352
4 7/8	123.8	3	76.2	900	21	3.2	NE	T3	—	MBH00248	—
4 15/16	125.4	3	76.2	1200	28	4.3	NE	T3	—	MBH00249	—
5	127.0	1	25.4	400	27	4.2	SE	T2	—	MBH00250	—
5	127.0	1 1/2	38.1	350	16	2.5	NE	T2	—	—	MBH00353
5	127.0	1 1/2	38.1	700	32	4.9	NE	T2	—	MBH00251	—
5	127.0	1 1/2	38.1	800	36	5.6	NE	T2	—	MBH00252	—
5	127.0	2	50.8	1000	34	5.3	NE	T2	—	MBH00253	—
5	127.0	2 1/2	63.5	1000	27	4.2	NE	T3	—	MBH00254	—
5	127.0	3	76.2	1200	27	4.2	NE	T3	—	MBH00255	MBH00354
5	127.0	3 1/4	82.6	800	17	2.6	NE	T3	—	—	MBH00355
5	127.0	3 1/4	82.6	1250	26	4.1	NE	T3	—	MBH00256	—
5	127.0	4	101.6	1500	25	4.0	NE	T3	—	MBH00257	—
5 1/8	130.2	1 1/2	38.1	900	40	6.2	NE	T2	—	MBH00258	—
5 1/8	130.3	1 1/2	38.1	600	26	4.1	NE	T2	—	MBH00259	—
5 1/4	133.4	1	25.4	500	32	5.0	SE	T2	—	MBH00260	—
5 1/4	133.4	1	25.4	600	39	6.0	SE	T2	—	MBH00261	MBH00356
5 1/4	133.4	1 1/2	38.1	600	26	4.0	NE	T2	—	MBH00262	MBH00357
5 1/4	133.4	1 1/2	38.1	1000	43	6.7	NE	T2	—	MBH00263	—
5 1/4	133.4	2	50.8	1000	32	5.0	NE	T2	—	MBH00264	—
5 1/4	133.4	2 1/4	57.2	1300	37	5.8	NE	T2	—	—	MBH00358
5 1/4	133.4	2 1/2	63.5	1300	34	5.2	NE	T3	—	MBH00265	—
5 1/4	133.4	3	76.2	1700	37	5.7	NE	T3	—	MBH00266	—
5 1/2	139.7	1 1/2	38.1	800	33	5.1	NE	T2	—	MBH00267	—
5 1/4	146.1	1 1/2	38.1	600	23	3.6	NE	T2	—	MBH00268	—
5 1/8	149.2	3	76.2	1000	19	3.0	NE	T3	—	MBH00269	—
5 15/16	150.8	1 1/2	38.1	1000	38	5.9	NE	T2	—	MBH00270	—
6	152.4	1	25.4	500	28	4.3	SE	T2	—	MBH00271	—
6	152.4	1 1/8	34.9	950	39	6.0	SE	T2	MBH00166	—	—
6	152.4	1 1/2	38.1	600	22	3.5	NE	T2	—	MBH00272	—
6	152.4	1 1/2	38.1	850	32	4.9	NE	T2	MBH00167	MBH00273	—
6	152.4	1 1/2	38.1	900	34	5.2	NE	T2	—	MBH00274	—
6	152.4	1 1/2	38.1	1000	40	6.2	NE	T2	—	MBH00275	—
6	152.4	2	50.8	1200	34	5.2	NE	T2	—	MBH00276	—
6	152.4	2 1/2	63.5	1450	32	5.0	NE	T3	—	MBH00277	—
6	152.4	3	76.2	1400	26	4.1	NE	T3	—	MBH00278	MBH00359
6 1/8	155.6	1 1/2	38.1	1000	37	5.7	NE	T2	—	MBH00279	—
6 1/4	158.8	3	76.2	1500	27	4.2	NE	T3	—	MBH00280	MBH00360
6 1/16	160.3	3	76.2	1250	22	3.4	NE	T3	—	MBH00281	MBH00361
6 15/32	164.3	2	50.8	800	21	3.2	NE	T2	—	MBH00282	—
6 15/32	164.3	2	50.8	1200	33	5.1	NE	T2	—	MBH00283	—

Stock Items Are
Shown In **RED**

Order Info.
See page 1-48



Stock and Standard (Non-Stock) Mica Insulated Band Heaters for Plastic Injection Molding Machines

ID		Width		Wattage	Watt Density		Style	Term.	120V	Part Number		
in	mm	in	mm		W/in ²	W/cm ²				240V	480V	
6½	165.1	1½	38.1	750	26	4.0	NE	T2	—	MBH00284	—	
6½	165.1	1½	38.1	900	31	4.8	NE	T2	—	MBH00285	—	
6½	165.1	1½	38.1	1200	41	6.4	NE	T2	—	MBH00286	—	
6½	165.1	2	50.8	1000	26	4.0	NE	T2	—	MBH00287	—	
6½	165.1	2½	63.5	1200	25	3.8	NE	T3	—	MBH00288	MBH00362	
6¾	168.4	1½	38.1	815	27	4.2	NE	T2	—	MBH00289	—	
6¾	168.4	1½	38.1	1150	39	6.0	NE	T2	—	MBH00290	—	
6¾	171.5	1½	38.1	600	20	3.1	NE	T2	—	MBH00291	—	
6¾	171.5	1½	38.1	815	27	4.2	NE	T2	—	MBH00292	—	
6¾	171.5	1½	38.1	1000	33	5.1	NE	T2	—	MBH00293	—	
6¾	171.5	1½	38.1	1150	38	5.9	NE	T2	—	MBH00294	—	
6¾	171.5	2	50.8	1300	32	5.0	NE	T2	—	MBH00295	—	
6¾	171.5	4	101.6	2600	32	5.0	NE	T3	—	MBH00296	—	
7	177.8	1	25.4	750	36	5.5	SE	T2	—	MBH00297	—	
7	177.8	1½	38.1	950	30	4.7	NE	T2	—	MBH00298	—	
7	177.8	1½	38.1	1000	32	4.9	NE	T2	—	MBH00299	—	
7	177.8	2½	63.5	1000	19	3.0	NE	T3	—	MBH00300	—	
7	177.8	3	76.2	1650	26	4.1	NE	T3	—	MBH00301	MBH00363	
7½	180.2	3½	88.9	1200	16	2.5	NE	T3	—	MBH00302	MBH00364	
7½	180.2	3½	88.9	1650	22	3.4	NE	T3	—	MBH00303	MBH00365	
7½	181.0	1½	38.1	1200	37	5.8	NE	T2	—	MBH00304	—	
7½	181.0	3½	88.9	1650	22	3.4	NE	T3	—	MBH00305	—	
7½	184.2	2	50.8	900	21	3.2	NE	T2	—	MBH00306	—	
7½	190.5	1	25.4	700	31	4.8	SE	T2	MBH00168	—	—	
7½	190.5	1½	38.1	800	24	3.7	NE	T2	—	MBH00307	—	
7½	190.5	1½	38.1	1000	30	4.6	NE	T2	—	MBH00308	—	
7½	190.5	2	50.8	1500	36	5.2	NE	T2	—	MBH00309	—	
7½	190.5	3	76.2	1800	27	4.1	NE	T2	—	MBH00310	MBH00366	
7¾	193.7	1½	38.1	1000	29	4.5	NE	T2	—	MBH00311	—	
7¾	193.7	3	76.2	2000	29	4.5	NE	T2	—	MBH00312	—	
7¾	196.9	1½	38.1	1000	29	4.4	NE	T2	—	MBH00313	—	
7¾	200.0	1½	38.1	750	21	3.3	NE	T2	—	MBH00314	—	
7¾	200.0	1½	38.1	1000	28	4.4	NE	T2	—	MBH00315	—	
7¾	200.0	3	76.2	2000	28	4.4	NE	T3	—	MBH00316	—	
8	203.2	1	25.4	850	35	5.5	SE	T2	—	MBH00317	—	
8	203.2	1½	38.1	950	26	4.1	NE	T2	—	MBH00318	—	
8	203.2	1½	38.1	1200	33	5.1	NE	T2	—	MBH00319	MBH00367	
8	203.2	1½	38.1	1400	39	6.0	NE	T2	—	MBH00320	—	
8	203.2	2	50.8	1500	31	4.8	NE	T2	—	MBH00321	MBH00368	
8	203.2	3	76.2	2250	31	4.8	NE	T3	—	MBH00322	MBH00369	
8¼	209.6	2	50.8	1800	36	5.6	NE	T2	—	MBH00323	MBH00370	
8¼	209.6	4	101.6	3000	30	4.7	NE	T3	—	MBH00324	MBH00371	
8½	215.9	1½	38.1	1200	31	4.8	NE	T2	—	MBH00325	—	
8½	215.9	2	50.8	1600	31	4.8	NE	T2	—	MBH00326	—	
8¾	222.3	3	76.2	2000	25	3.9	NE	T3	—	MBH00327	MBH00372	
9	228.6	1½	38.1	1300	32	4.9	NE	T2	—	MBH00328	—	
9	228.6	1½	38.1	1500	37	5.7	NE	T2	—	MBH00329	MBH00373	
9	228.6	2	50.8	1800	33	5.1	NE	T2	—	MBH00330	—	
9½	241.3	1½	38.1	1600	40	5.7	NE	T2	—	MBH00331	—	
9½	241.3	2	50.8	1800	31	4.8	NE	T2	—	MBH00332	—	
9½	241.3	3	76.2	2000	23	3.6	NE	T3	—	MBH00333	MBH00374	
9¾	244.5	3	76.2	2000	23	3.5	NE	T3	—	MBH00334	MBH00375	
9¾	244.5	3	76.2	3000	34	5.3	NE	T3	—	MBH00335	MBH00376	
9¾	247.7	2	50.8	2000	34	5.2	NE	T2	—	MBH00336	—	
10	254.0	1½	38.1	1400	31	4.8	NE	T2	—	MBH00337	—	
10¼	260.4	3	76.2	2400	26	4.0	NE	T3	—	MBH00338	MBH00377	
10¼	260.4	4	101.6	3000	24	3.7	NE	T3	—	MBH00339	MBH00378	
10½	266.7	1½	38.1	1500	31	4.8	NE	T2	—	MBH00340	—	
10½	266.7	3	76.2	2400	25	3.9	NE	T3	—	MBH00341	MBH00379	
11	279.4	1½	38.1	1600	32	4.9	NE	T2	—	MBH00342	—	
11	279.4	2	50.8	2000	30	4.6	NE	T2	—	MBH00343	—	
11¼	285.8	3	76.2	2400	23	3.6	NE	T3	—	MBH00344	—	
11½	292.1	1½	38.1	800	15	2.4	NE	T2	MBH00169	—	—	
11½	292.1	1½	38.1	1800	34	5.3	NE	T2	—	MBH00345	—	
12	304.8	1½	38.1	2000	36	5.6	NE	T2	—	MBH00346	—	
12	304.8	2	50.8	2300	31	4.9	NE	T2	—	MBH00347	MBH00380	

Stock Items Are
Shown In **RED**

Order Info.
See page 1-48