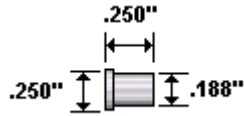
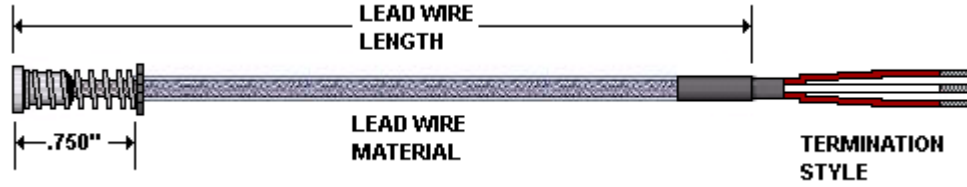


# Series RX1 Bearing RTD Sensor



Star washer

## Ordering Information Part Number

① RX1	② Element Type	③ Element Accuracy	④ Wire Configuration	⑤ Tip Style	⑥ Lead wire material	⑦ Lead wire length	⑧ Termination style
RX1							

②	Element type
T	100 Ω DIN 00385 (thin film)

⑤	Tip Style
T	1/4" X 1/4" X 3/16" (Top Hat)

⑦	Lead wire length (whole in.)
006"-600"	Specify in Inches
Note	<i>Over 600" contact factory</i>

③	Element Accuracy (@ 0 °C)
A	Class A (0.06%)
B	Class B (0.12%)

⑥	Lead wire material
B	Teflon FEP (400°F)
D	Teflon FEP with stainless steel braid (400°F)
L	Teflon FEP w/stainless steel braid w/Teflon FEP outer jacket

⑧	Termination style
A	2" stripped leads (bare ends) (standard)

④	Wire Configuration
2	2-wire
3	3-wire

## SOUTHWEST HEATER AND CONTROLS